

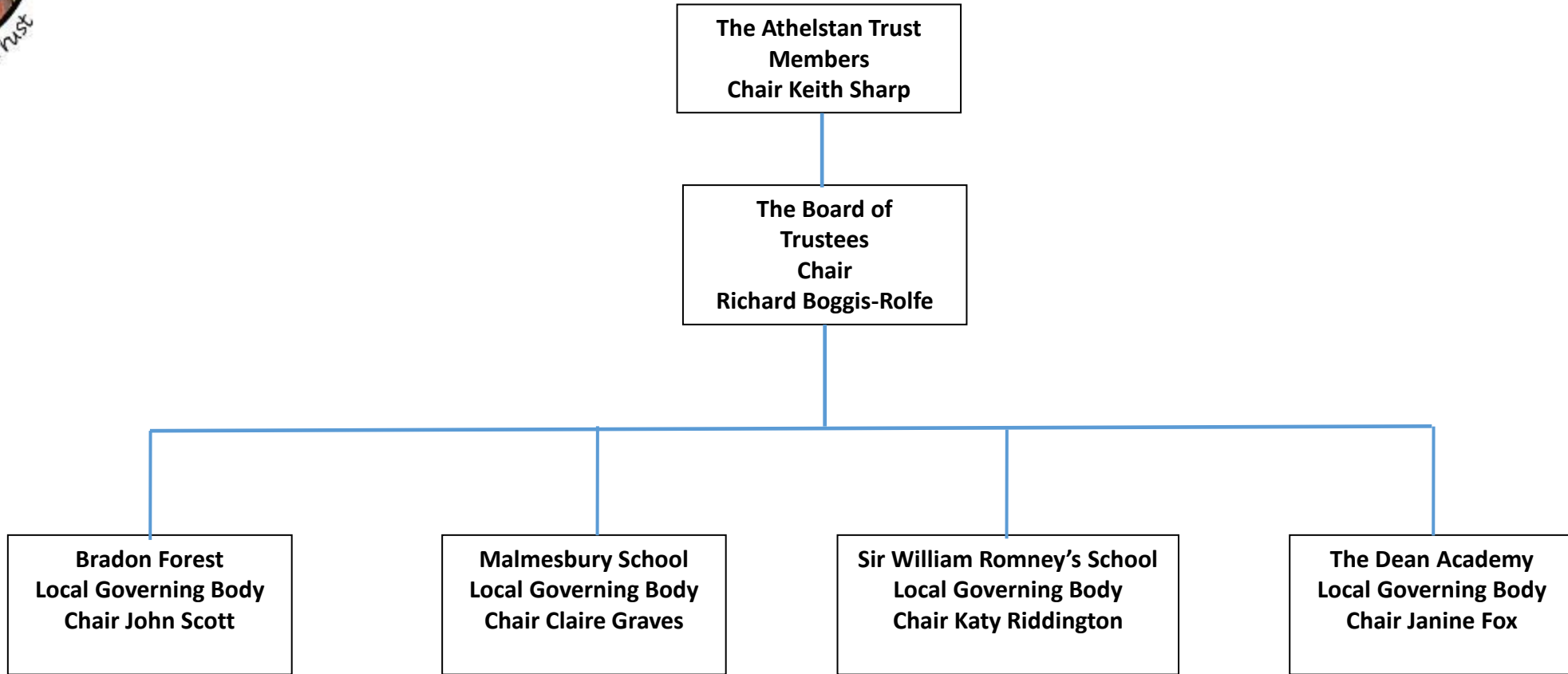
The Athelstan Trust



‘Caring, collaborative and excellent’

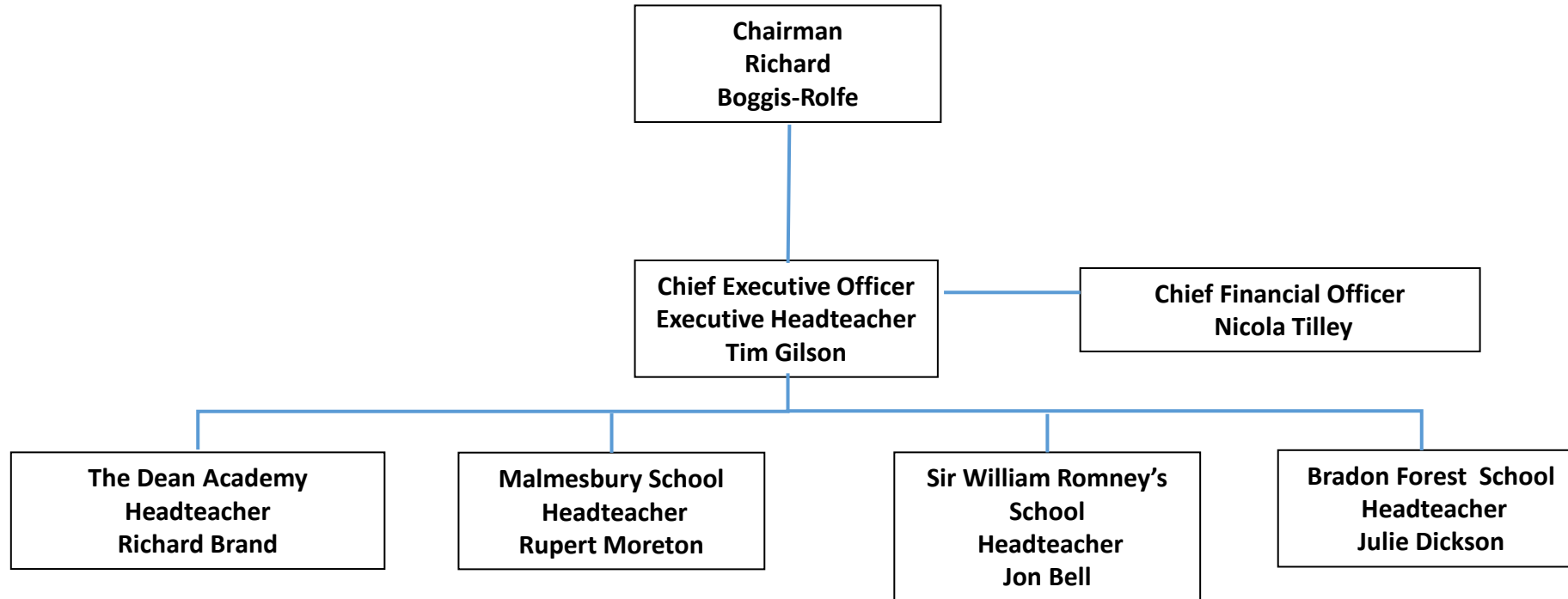


Trust Governance Structure



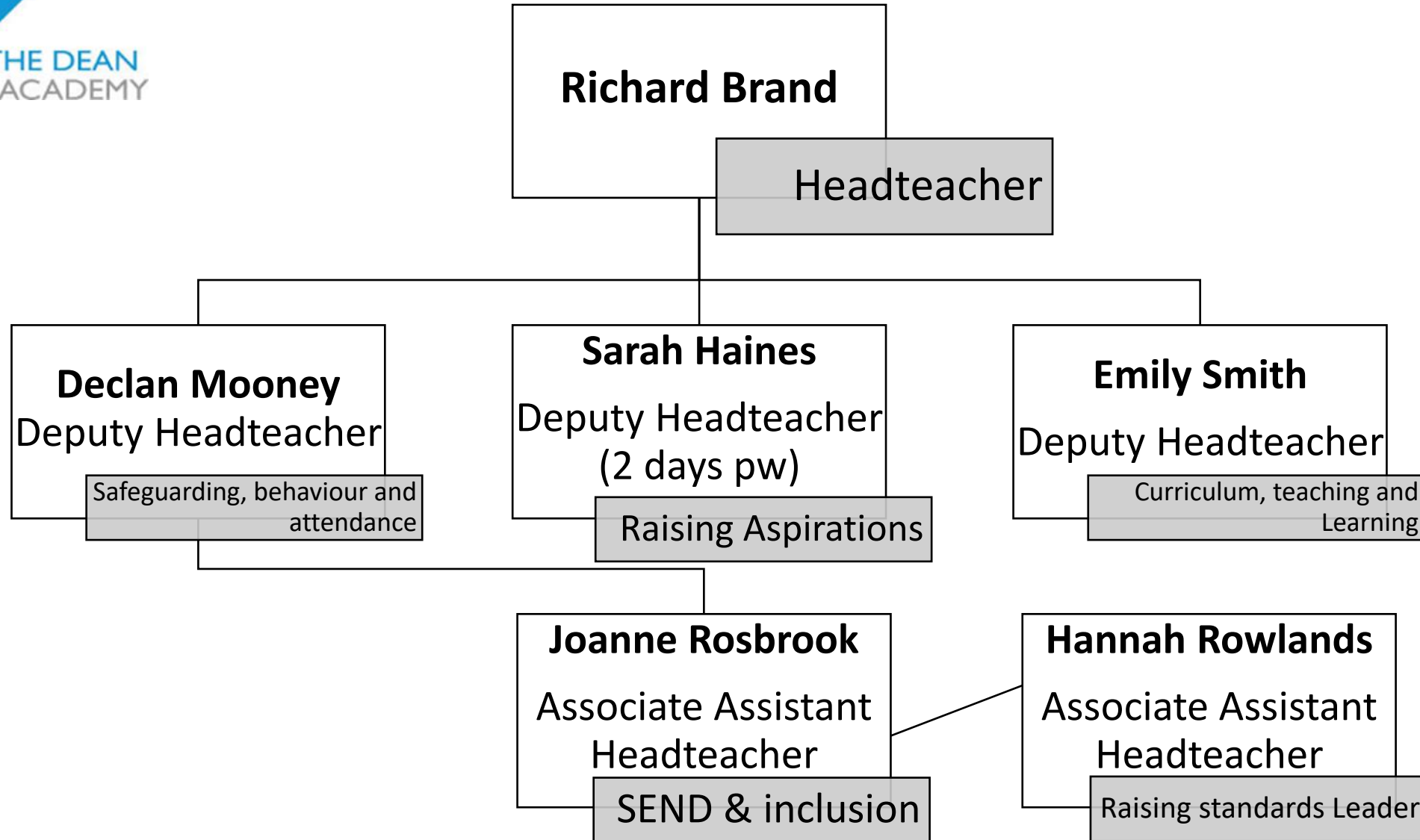


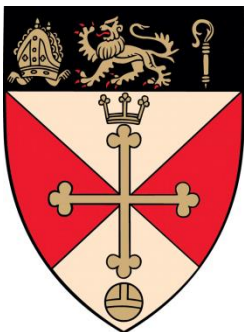
Trust Leadership structure





2020 – 2021 Leadership Responsibility at The Dean Academy





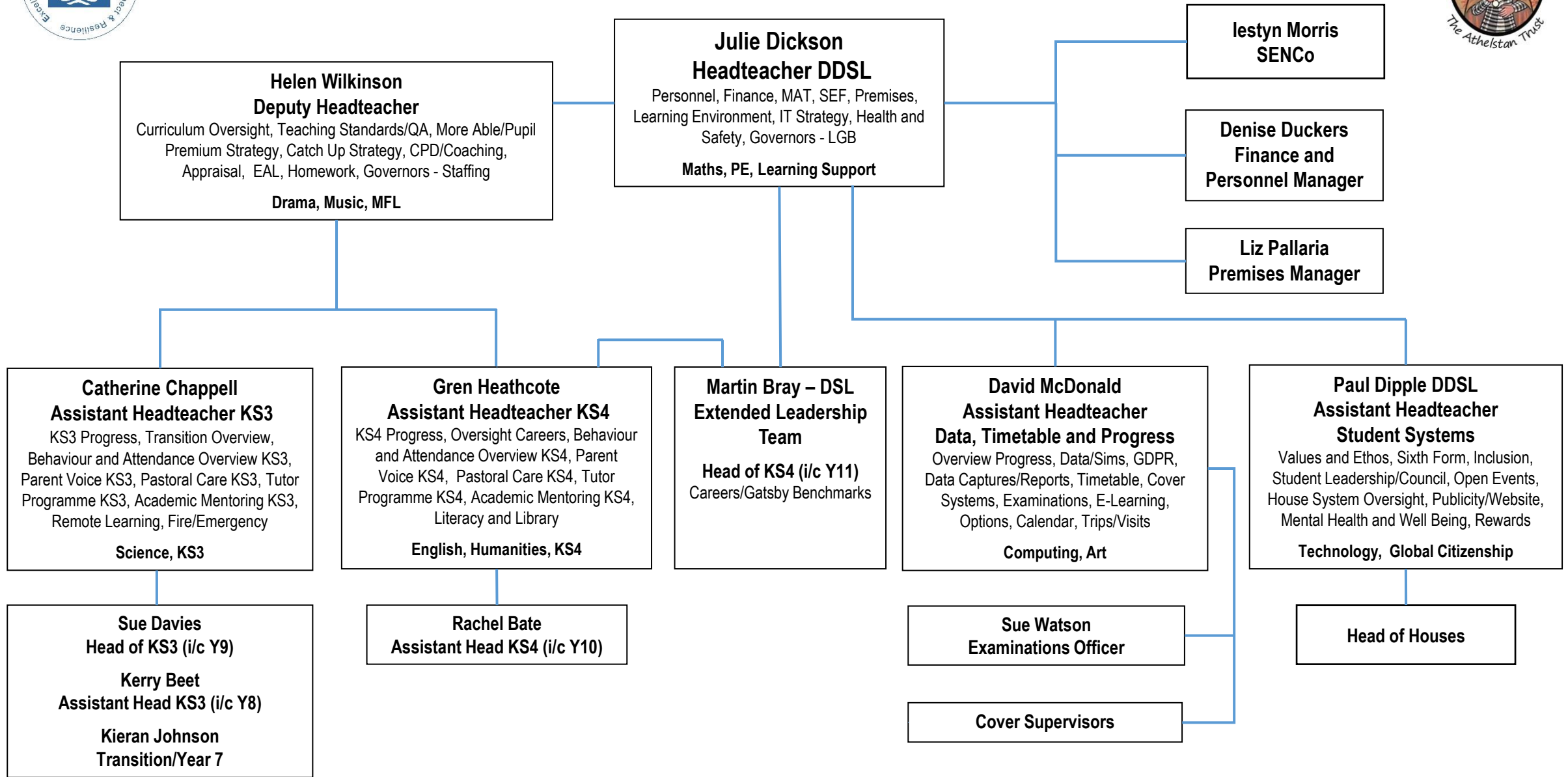
2020/2021 Malmesbury School Leadership Responsibilities



Rupert Moreton Headteacher	Clark Harrell Deputy Headteacher	Mark Shadrick Assistant Headteacher	Sarah Haines Assistant Headteacher	Jen Howe Assistant Headteacher	Dan Baker Acting Assistant Headteacher
SIP/SEF Performance Management Staff Appraisal Teaching and learning standards SEND Chair of SCL LGB	Safeguarding Lead Looked After Children Alternative Provision Line management of science, IBL, DT, Cover and Bungalow BTEC Quality Nominee LGB PTA	Exams Data Reports Strategic Pupil Premium and strategic leadership of Academic Leaders KS4 Chair KS4 Raising Standards Line management Maths and PE	Deputy Safeguarding Lead/MAF meetings Attendance Teaching School CPD KS5 Line management of English Chair KS5 Raising Standards	Timetable Year 9 options Recruitment Year 8 and 9 NQTs/New staff Duties Transport Well-being Charter Curriculum Lead Line management of Humanities Chair KS3 Raising Standards meeting	Heads of House Year 7 and Transition School Council Trips/Visits NQTs Newsletter Community Deputy Safeguarding Lead LGB Local Youth Network Meetings Raising Standards Yr 7 Line management of ilearn and Creative Arts



2020/2021 Leadership Responsibilities - Bradon Forest School





2020/2021 SLT Areas of Responsibility – Sir William Romney’s School

