



The Athelstan Trust



‘Caring, Collaborative and Excellent’

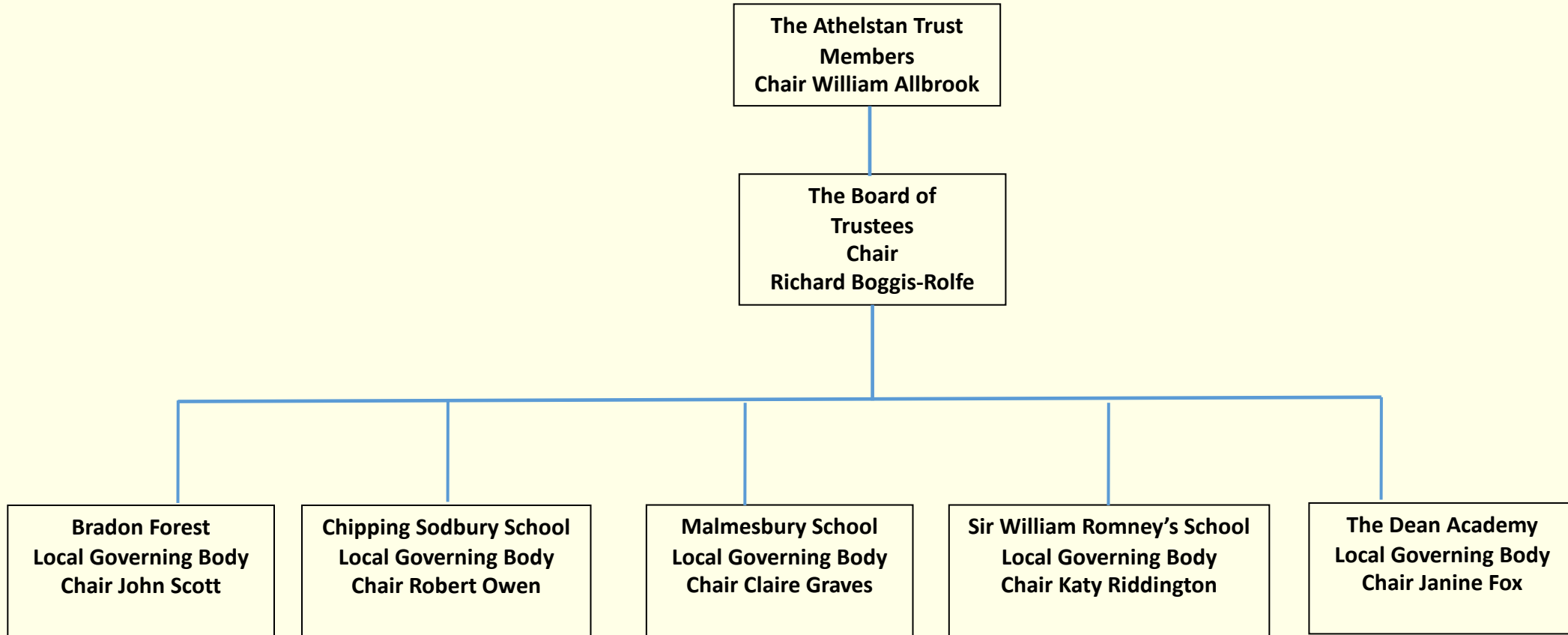
www.theathelstantrust.org





The Athelstan Trust

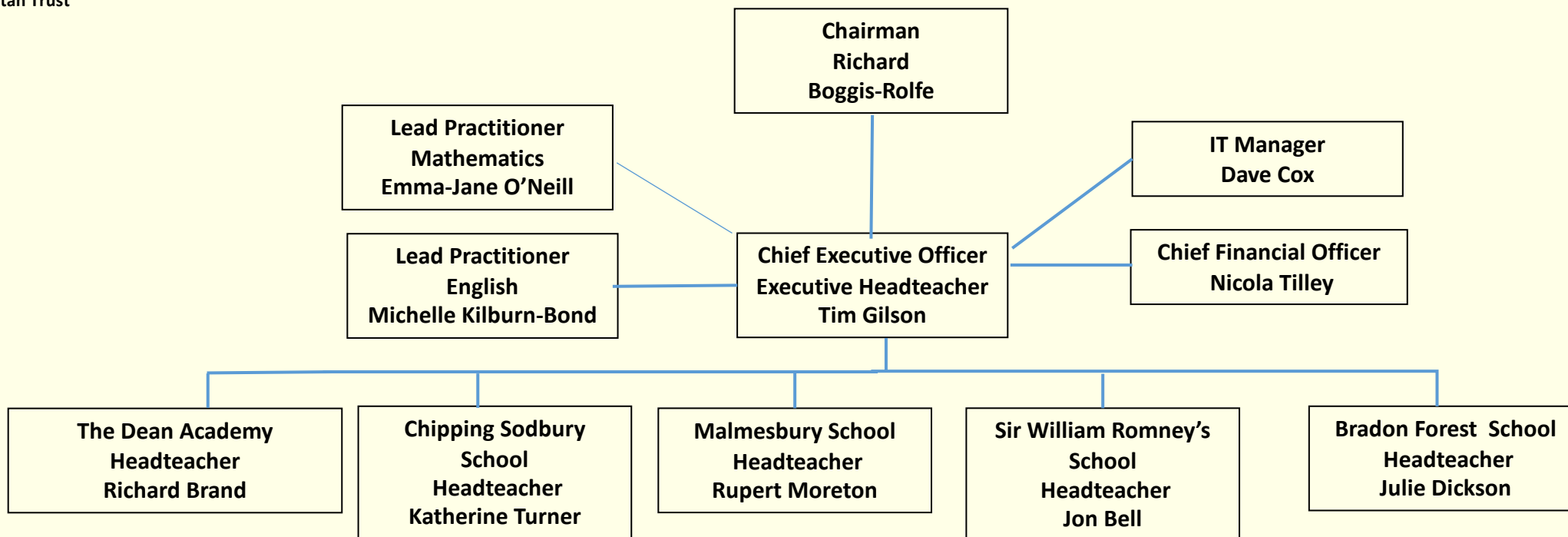
Trust Governance Structure



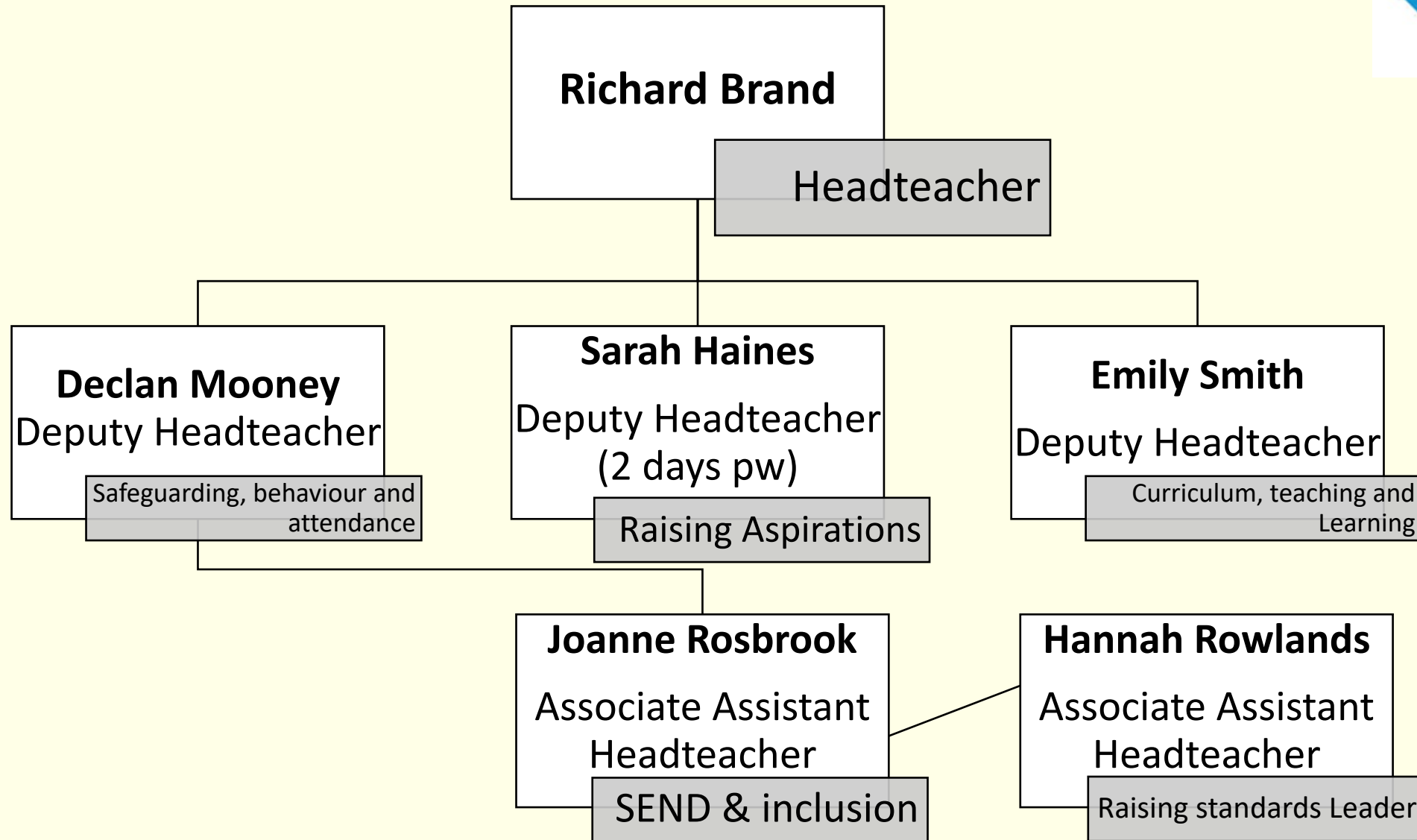


The Athelstan Trust

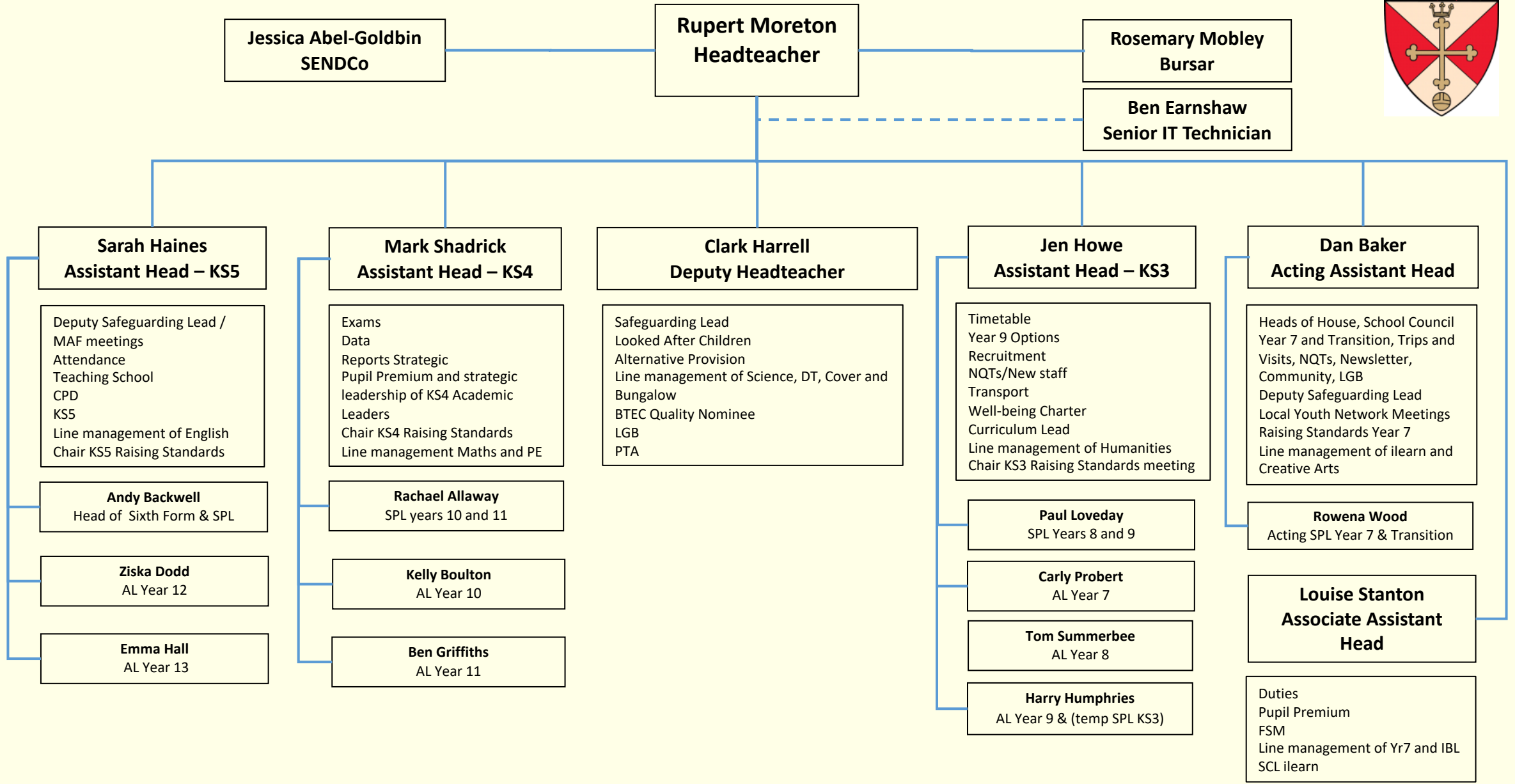
Trust Leadership structure



2020 – 2021 Leadership Responsibility at The Dean Academy



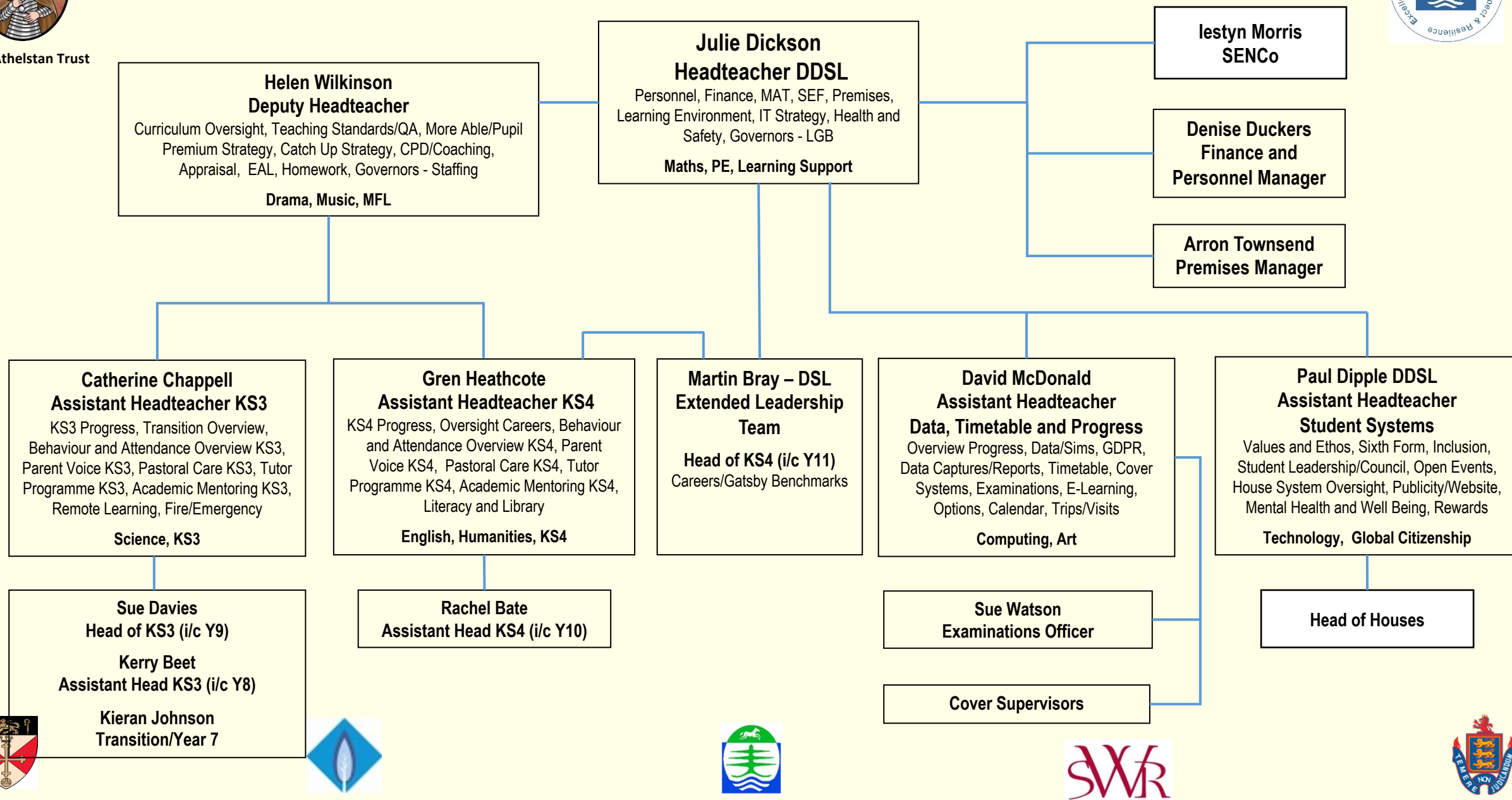
Malmesbury School Areas of Responsibility 2020-2021





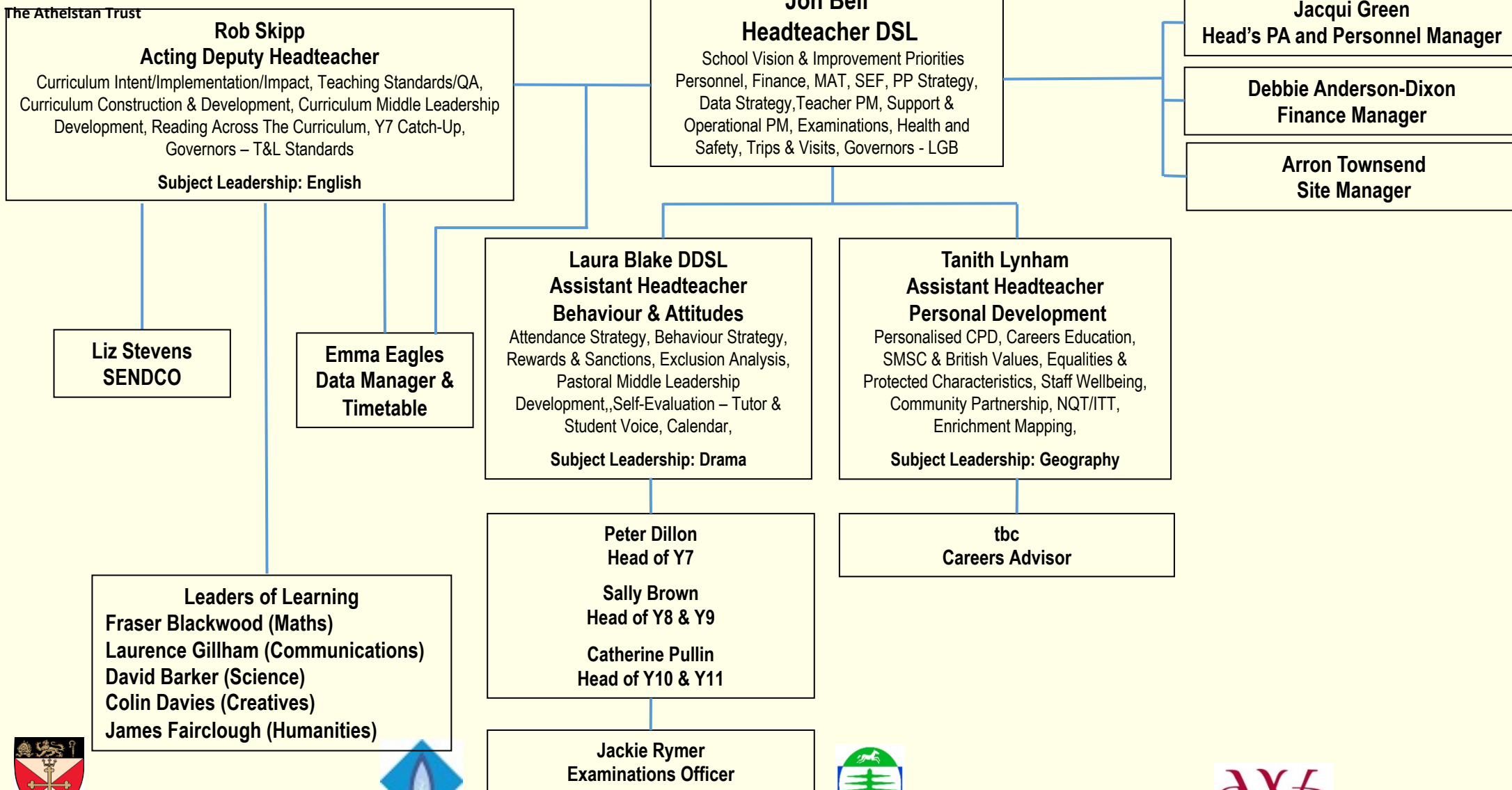
The Athelstan Trust

2020/2021 Leadership Responsibilities - Bradon Forest School





2020/2021 SLT Areas of Responsibility – Sir William Romney’s School





The Athelstan Trust

Headteacher (KTR): whole school organisation, strategic development, school evaluation, school improvement, personnel, recruitment, appraisal, finance. Line manage: Senior Team, maths and English. Governors inc. FGB

Deputy Headteacher (DHS): student engagement – student progress, behaviour, interventions, RAP, inclusion including AS Centre, Alt Provision. Line manage: Heads of House, attendance/DSL, Life, Careers, SENCo. Chair middle leaders meetings

Assistant Headteacher (KMN): curriculum – curriculum design and provision, external and internal exams, Open Evening, Post 16. Line manage: science, Hums, MFL/PP, Head of Post 16

Assistant Headteacher (LDS): teaching and learning – pedagogy, quality of t&l, CPD inc Inset, ITE, NQTs, literacy. Line manage: TDI, literacy, PE

Business Manager (RBR): budget, site, cover, IT, H&S, media, website, trips, admin. Line manage: site team, admin staff

Head's PA (JPO)

Heads of House/Progress Leads

Associate Assistant Headteacher (CWD): Attendance, DSL, Senate, rewards, extra curricular

Associate Assistant Headteacher (CPH): disadvantage lead, Head of MFL. Line manage KVS/SCR

Chair Heads of Faculty team meetings
Timetable, transition

Literacy co-ordinator

Life and Careers

Tutors

SENCo
AS Centre Manager

Head of Post 16

Heads of Faculty

Support staff:
Reception, admin, Finance, cover, Sport Centre, First Aid, Reprographics, Site

Student support administrator (NWD)

Alt Provision HLTAs

TAs

6th Form tutor team

Teaching Staff Technicians

Student co-ordinators inc Deputy DSL (EES, SSE, JOY)

Attendance Clerk (FBR)

Curriculum data administrator (RBL)

Exams officer (TGN)

Chipping Sodbury School organisation 2020-2021





The Athelstan Trust



‘Caring, Collaborative and Excellent’

www.theathelstantrust.org

