



The Athelstan Trust



‘Caring, Collaborative and Excellent’

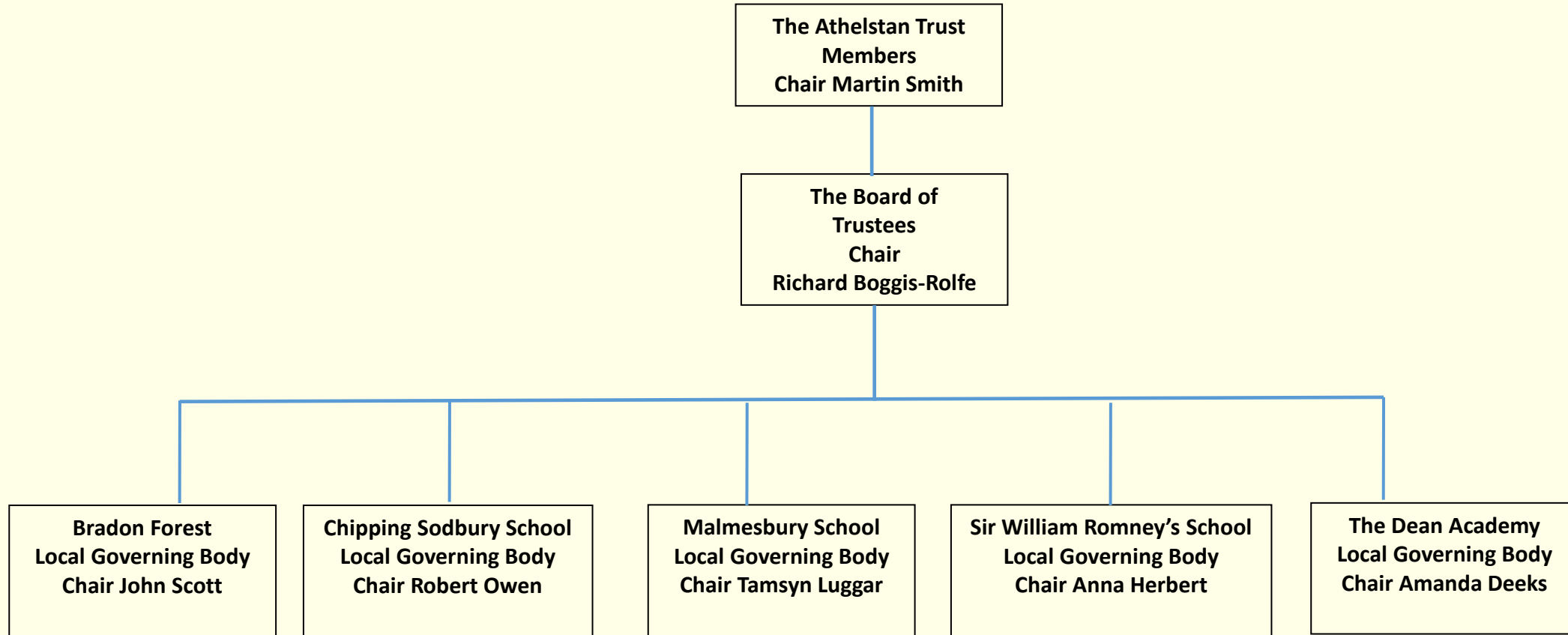
www.theathelstantrust.org





The Athelstan Trust

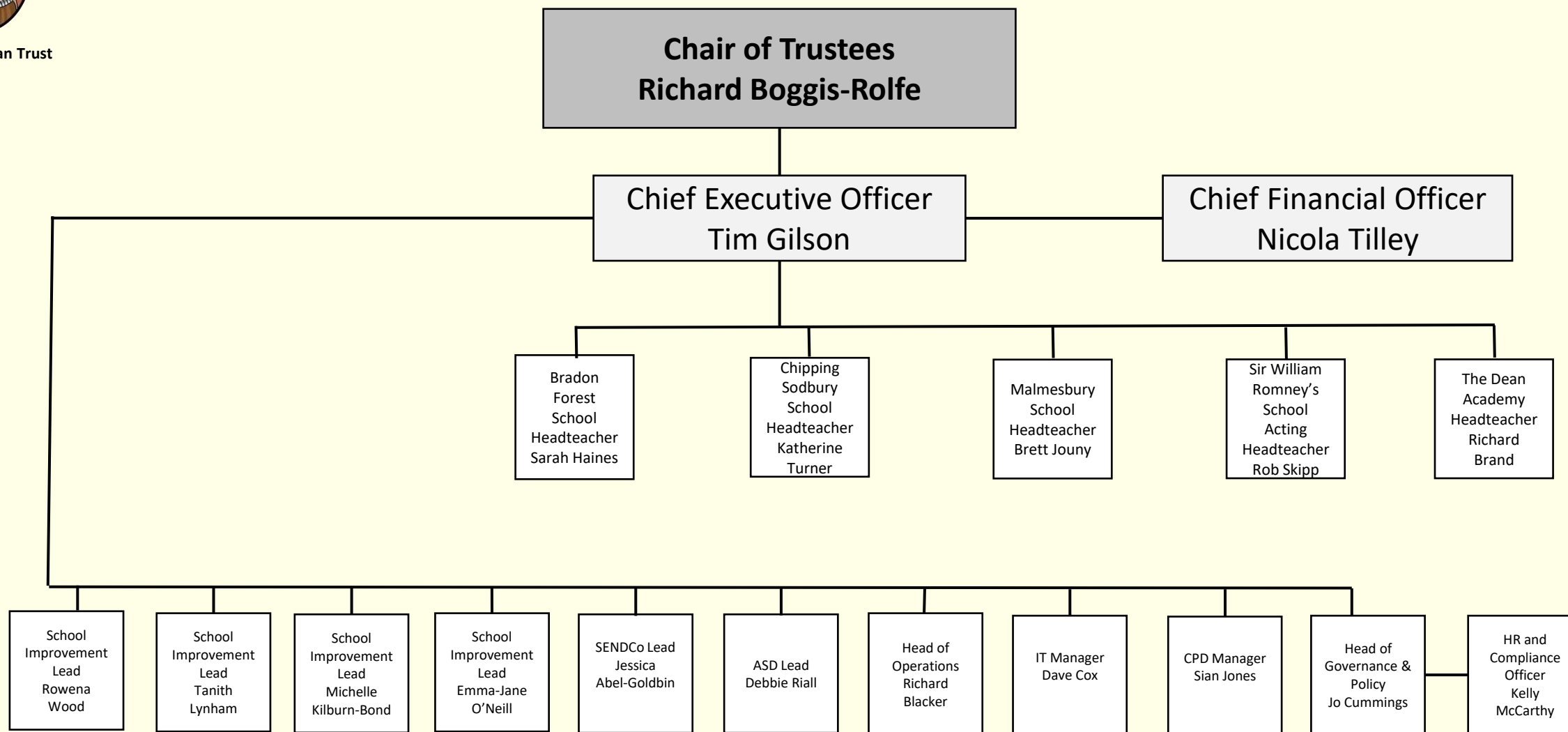
Trust Governance Structure





The Athelstan Trust

Trust Leadership 2022 - 2023





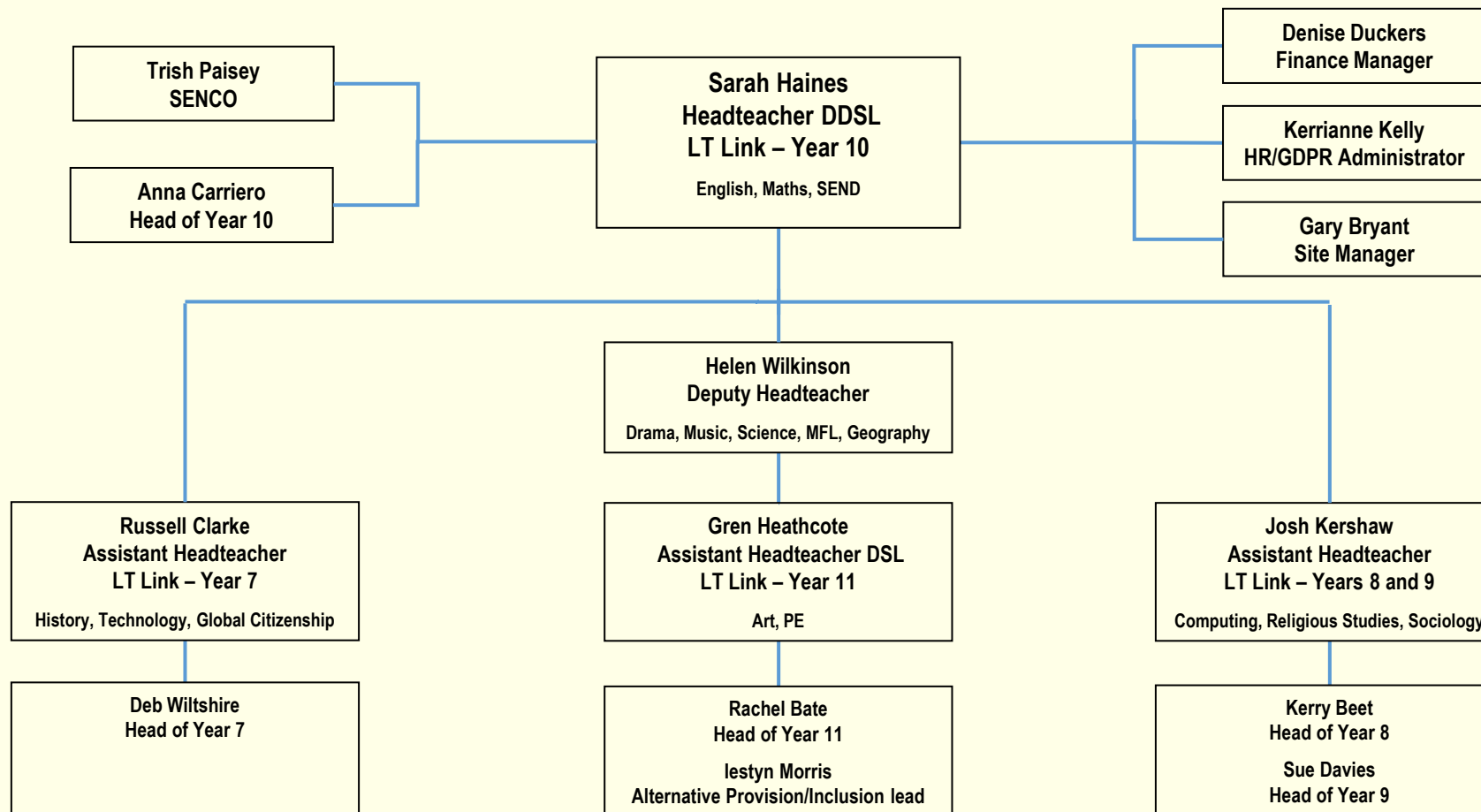
The Athelstan Trust



2022/23 Leadership Responsibilities - Bradon Forest School



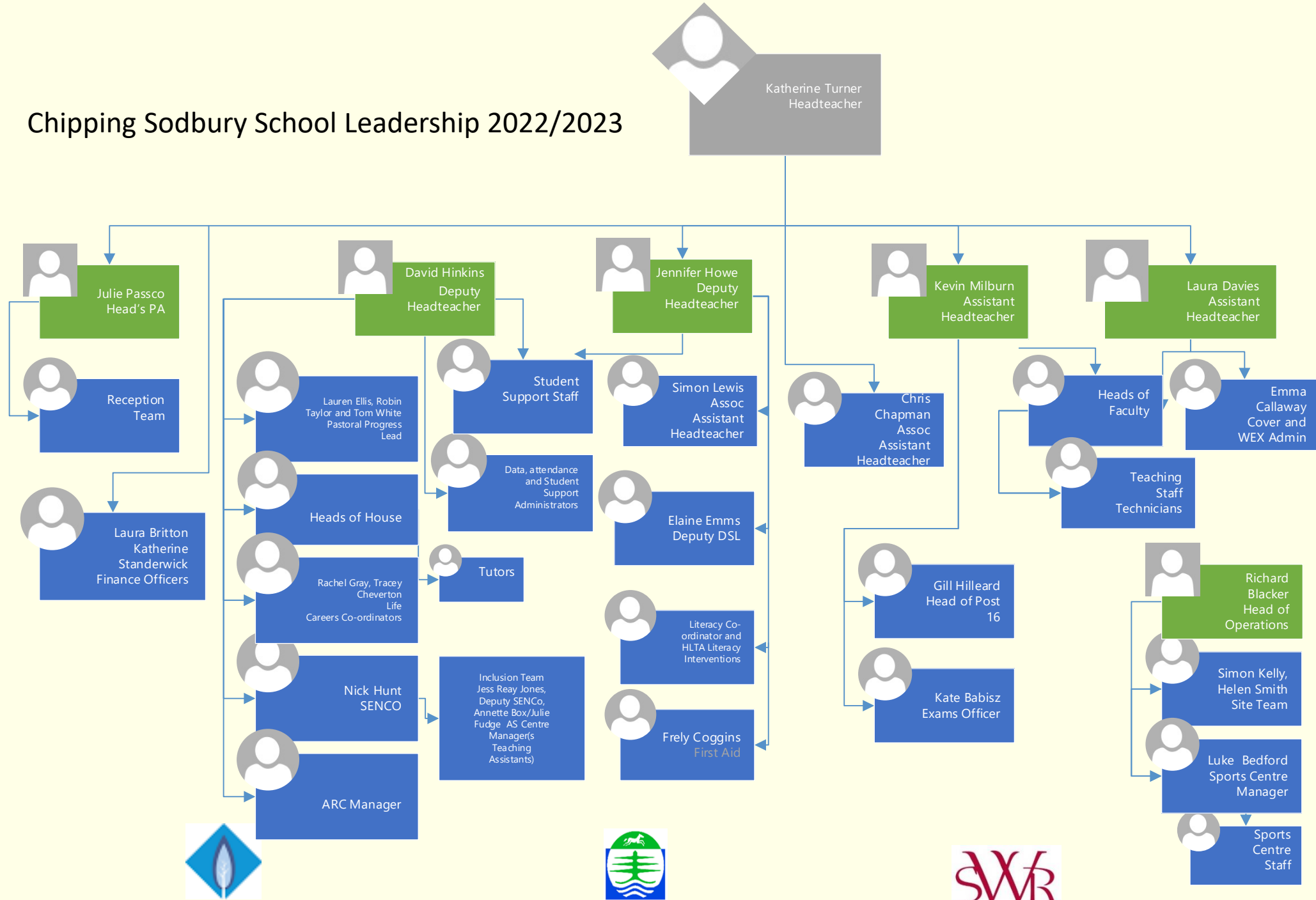
The Athelstan Trust





The Athelstan Trust

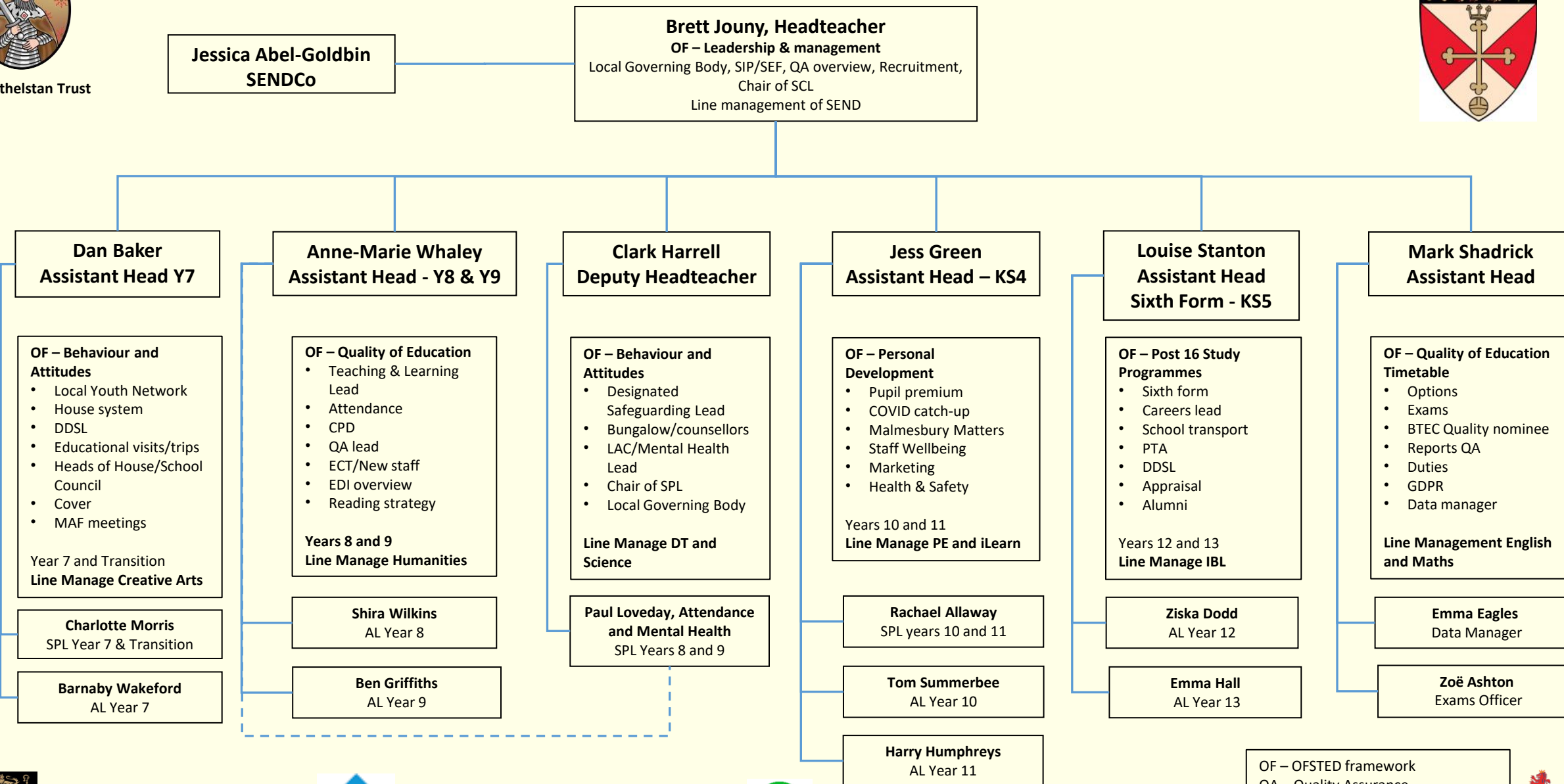
Chipping Sodbury School Leadership 2022/2023



Malmesbury School SLT Areas of Responsibility 2022-2023



The Athelstan Trust



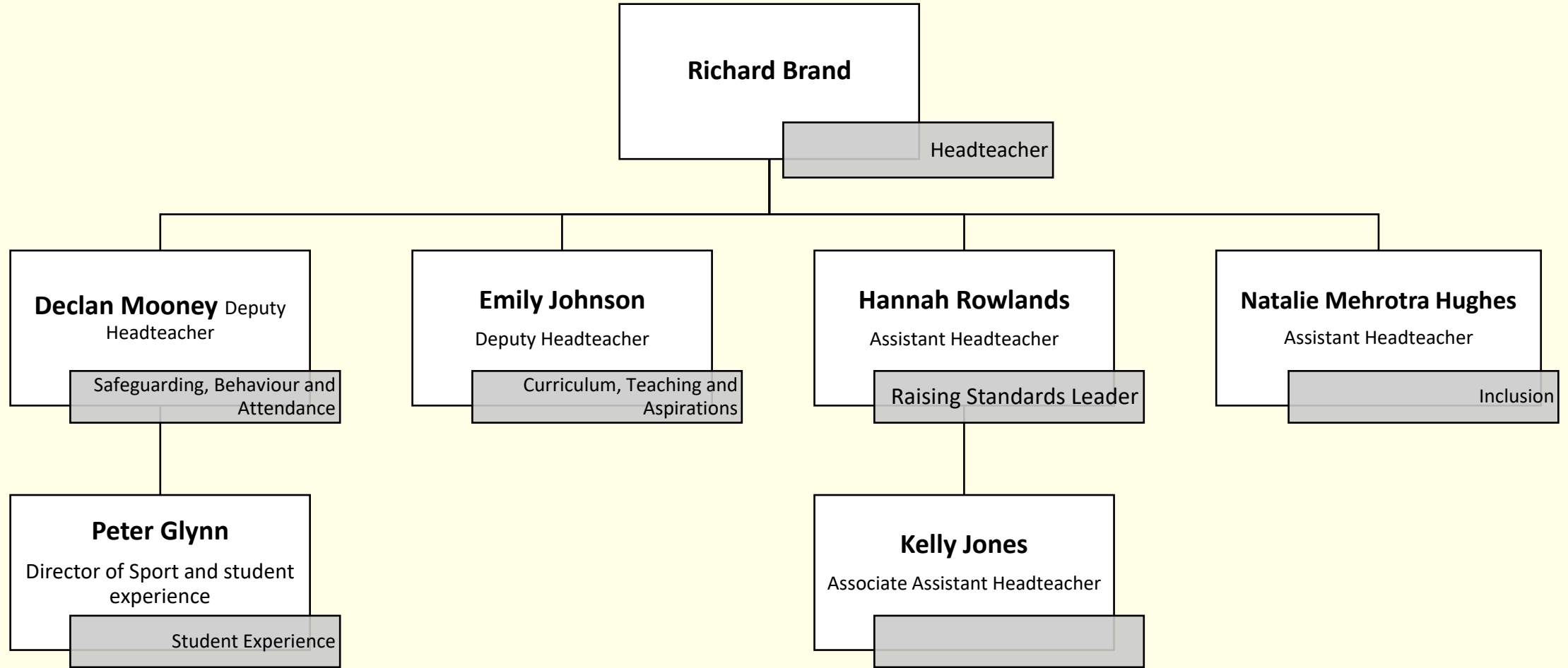
OF – OFSTED framework
QA – Quality Assurance
EDI – Equality, Diversity & Inclusivity
ECT – Early Career Teacher





The Athelstan Trust

2022 – 2023 Leadership Responsibility at The Dean Academy





The Athelstan Trust

2022/2023 SLT Areas of Responsibility – Sir William Romney’s School



Jackie Rymer
Data Manager &
Examinations Officer

Tanith Lynham
Acting Deputy Headteacher/Trust
School Improvement Lead
Personal Development
SWR Sixth, Careers Education, SMSC &
British Values, Equalities & Protected
Characteristics, Staff Wellbeing, Community
Partnership, Enrichment Mapping, EDI, Data
Strategy & Implementation

Rob Skipp
Acting Headteacher (DDSL)
School Vision & Improvement Priorities
Personnel, Finance, MAT, SEF, Teacher PM,
Support & Operational PM, Health and Safety,
Trips & Visits, Governors – LGB, Curriculum
Intent/Implementation/Impact, Curriculum
Construction and Development, Timetable
Oversight, Intervention Programmes

Daisy Alban-Jones
Head’s PA and Personnel Manager

Laura Britton
Finance Manager

Toby Bell
Site Manager

Sarah Hickinbotham
Acting SENCO

Kate Townsend
SIMS Data & Cover Manager

Daniel Skirrow
Assistant Headteacher
Teaching & Learning
Strategic leadership of T&L, Teaching
Standards (QA), Personalised CPD,
ECT/ITT Lead, Homework Strategy,
Enrichment, Curriculum Middle
Leadership Development, Teaching
Standards/QA

**Laura Blake Assistant
Headteacher (DDSL)**
Behaviour & Attitudes
Attendance Strategy, Behaviour Strategy,
Rewards & Sanctions, Exclusion Analysis,
Pastoral Middle Leadership
Development, Self-Evaluation – Tutor &
Student Voice, Calendar,
Subject Leadership: Drama

Peter Dillon (DSL)
Associate Assistant Headteacher
Culture & Ethos
Partner Primary Relationships, Parent
Engagement. Attitude to Learning, Student
Council, House System, Profile of
Safeguarding, Communication with Parents
and community
Subject Leadership: Music

Leaders of Learning
Fraser Blackwood (Maths)
Jacq Powell (Communications)
David Barker (Science)
Colin Davies (Creatives)
James Fairclough (Humanities)

Sarah Nicholls
Head of Y7
Carrie Wilson
Head of Y8 & Y9
Dan Mills
Acting Head of Y10 & Y11





The Athelstan Trust



‘Caring, Collaborative and Excellent’

www.theathelstantrust.org

