



The Athelstan Trust



‘Caring, Collaborative and Excellent’

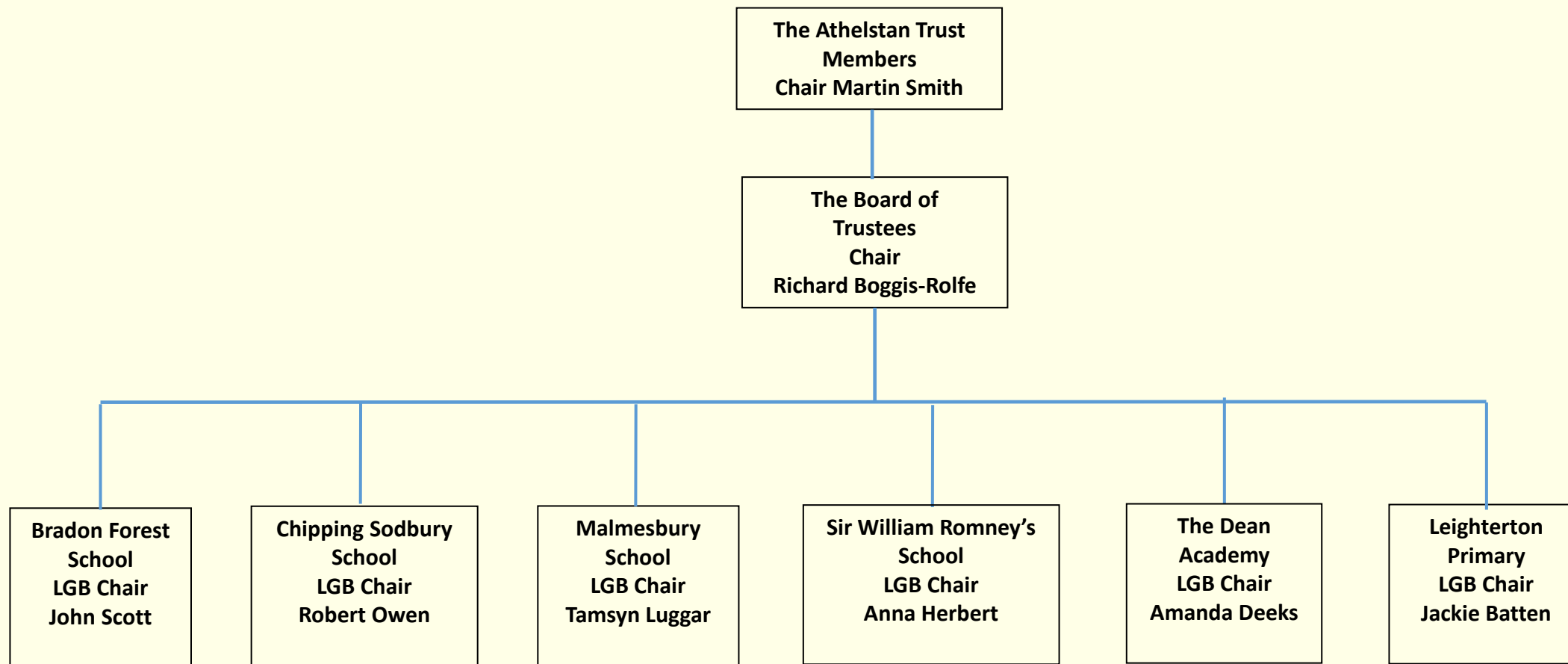
www.theathelstantrust.org





The Athelstan Trust

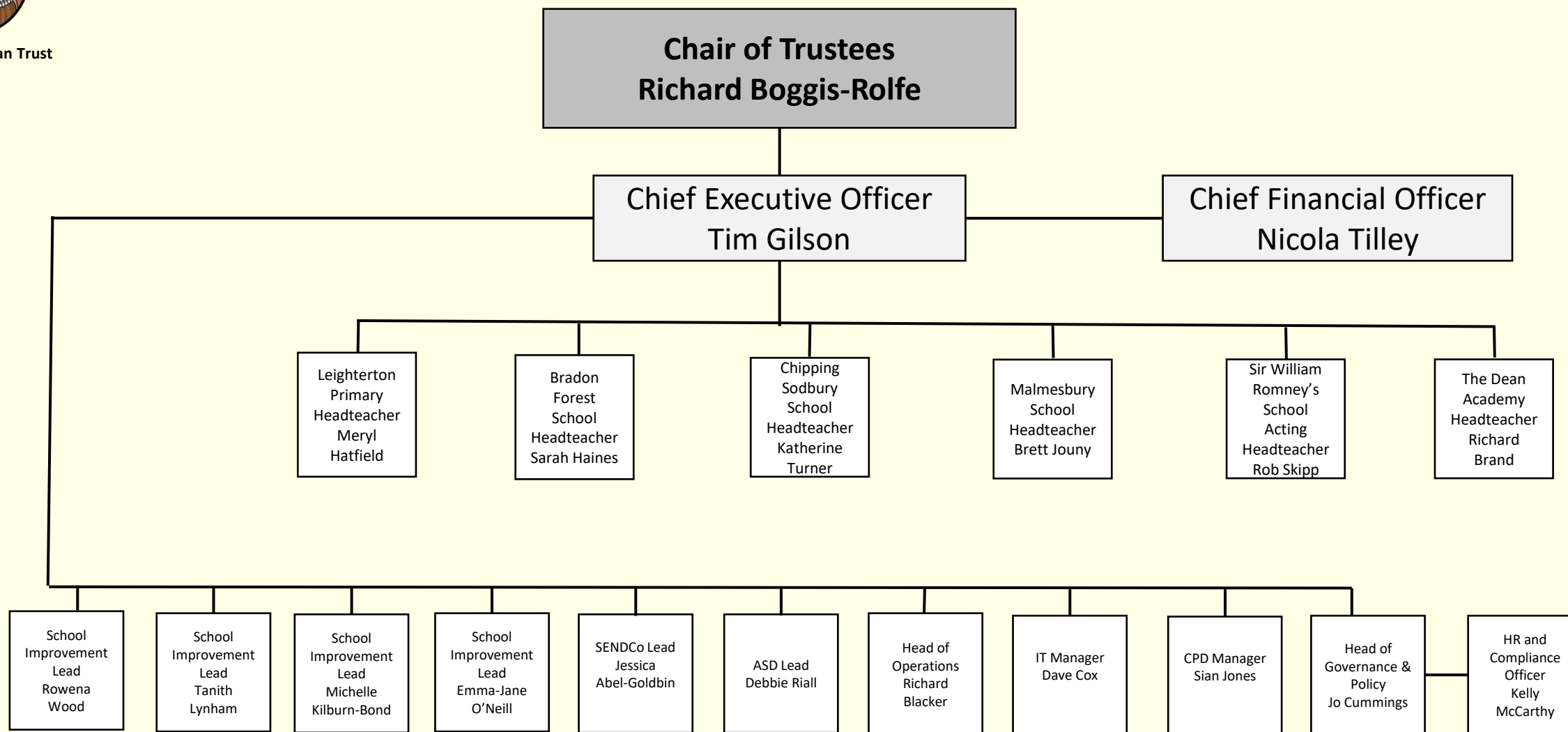
Trust Governance Structure





The Athelstan Trust

Trust Leadership 2022 - 2023





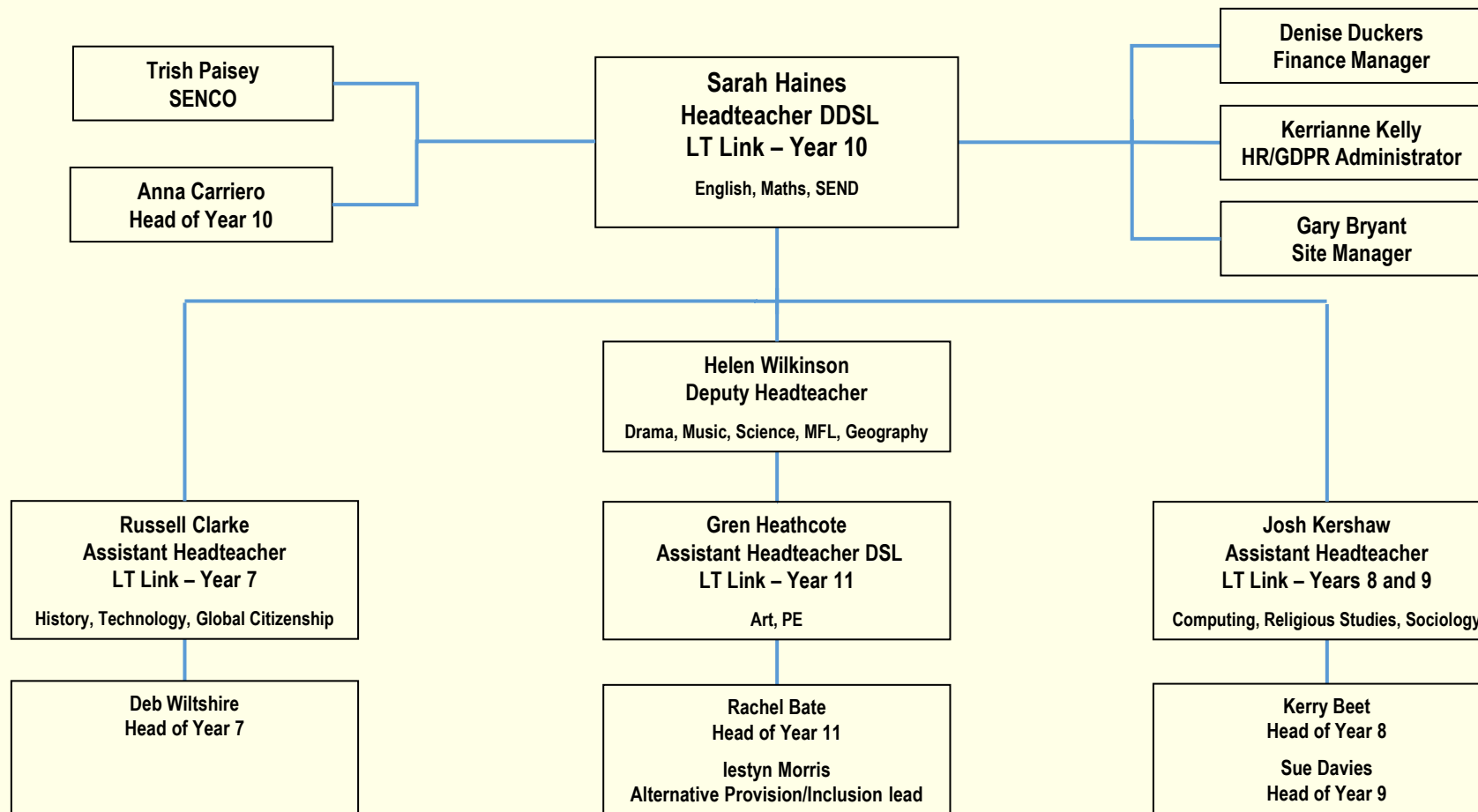
The Athelstan Trust



2022/23 Leadership Responsibilities - Bradon Forest School



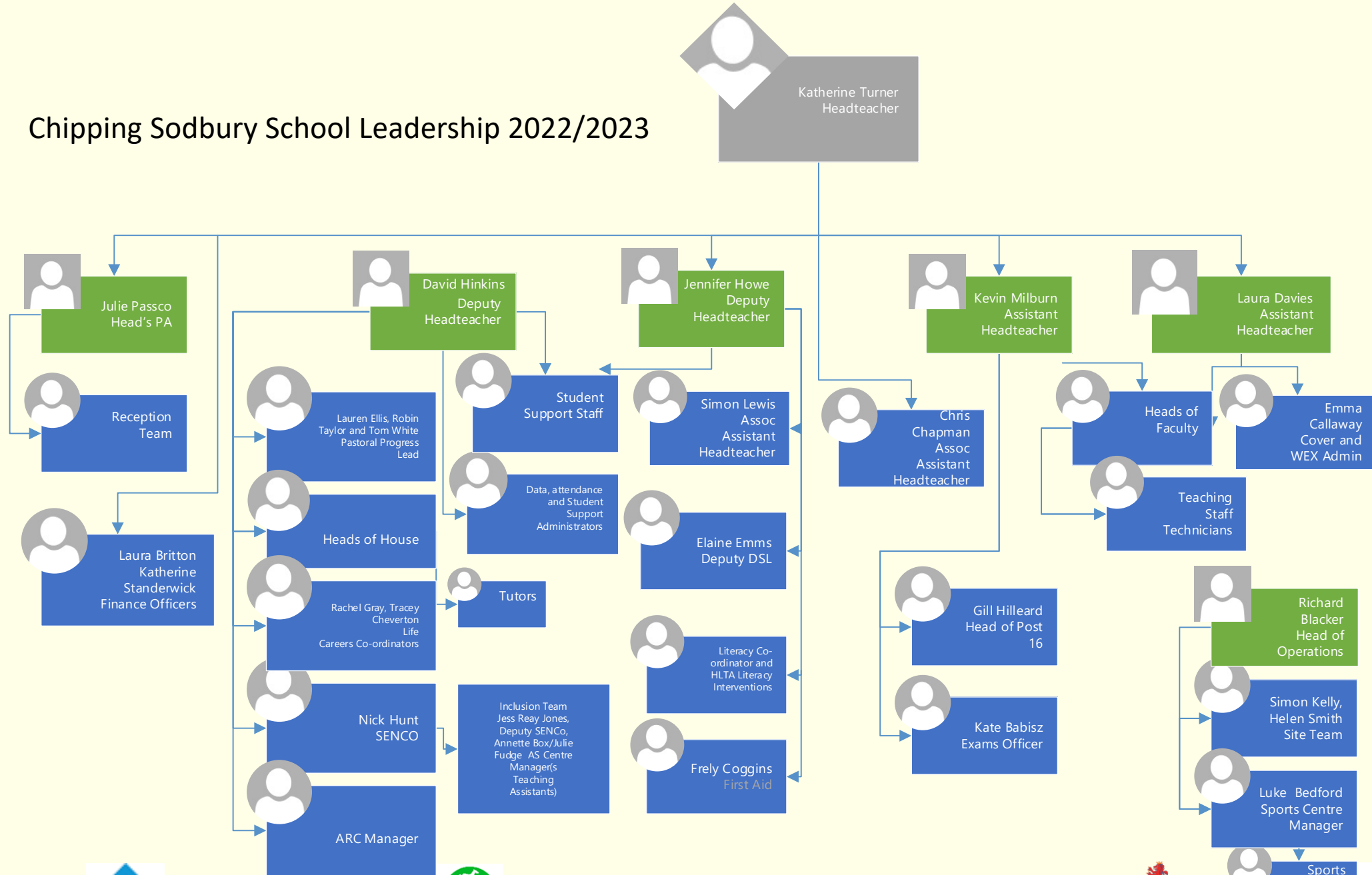
The Athelstan Trust





The Athelstan Trust

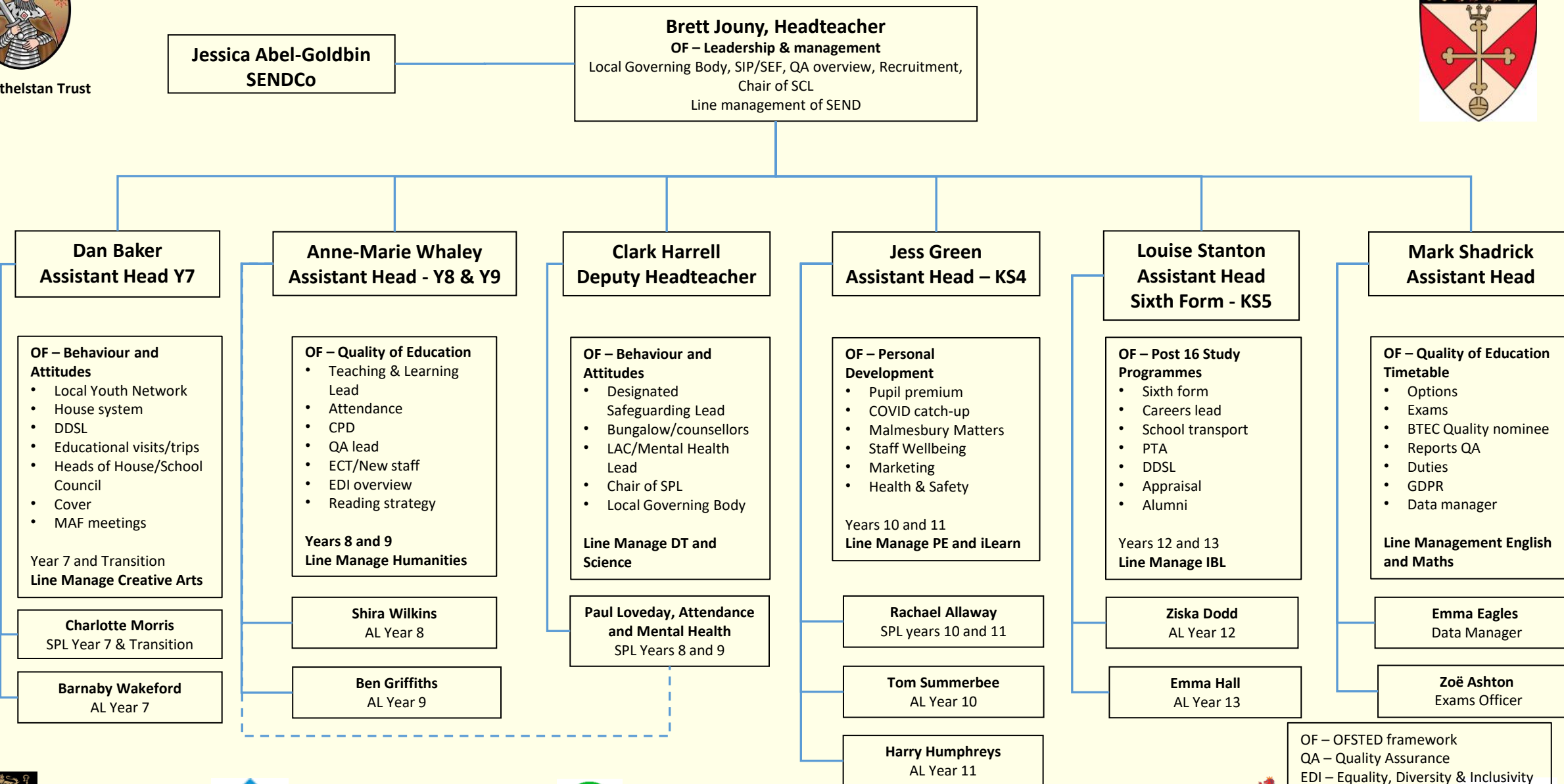
Chipping Sodbury School Leadership 2022/2023



Malmesbury School SLT Areas of Responsibility 2022-2023



The Athelstan Trust

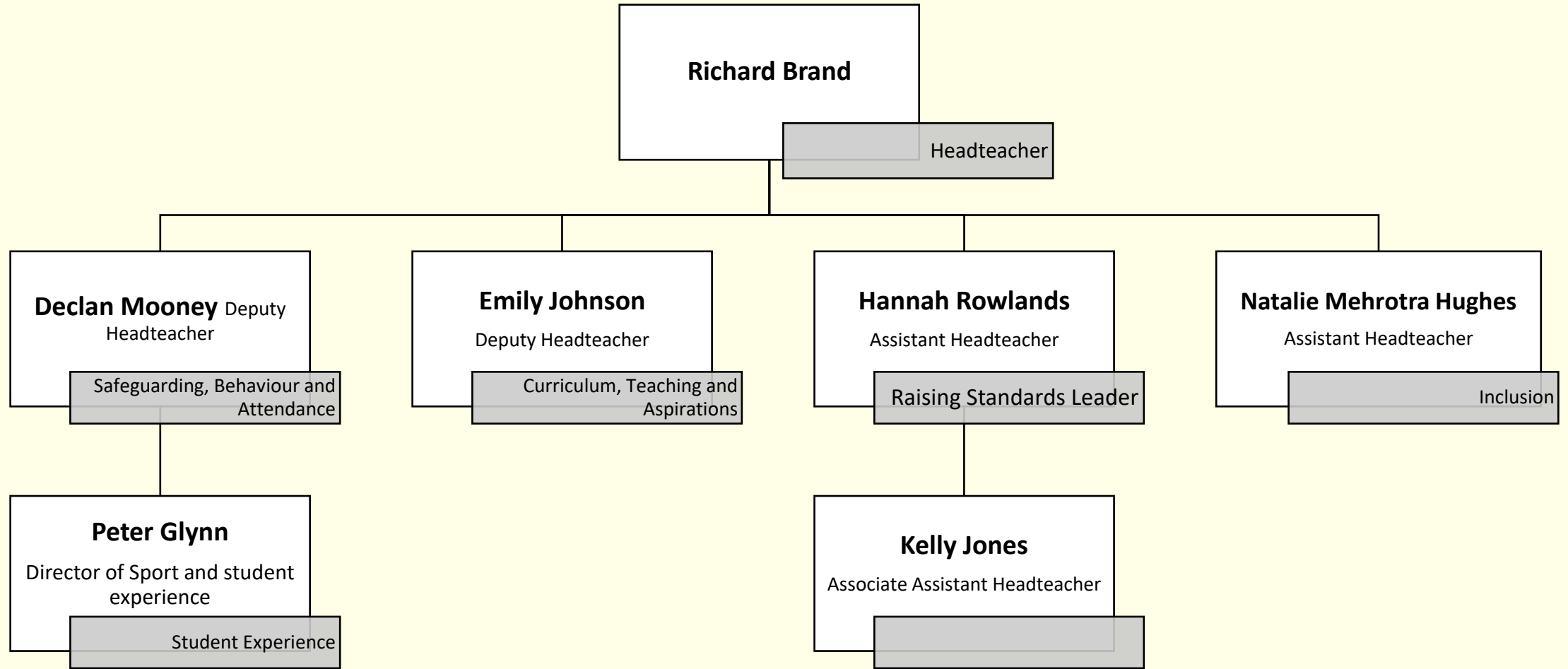


OF – OFSTED framework
 QA – Quality Assurance
 EDI – Equality, Diversity & Inclusivity
 ECT – Early Career Teacher



The Athelstan Trust

2022 – 2023 Leadership Responsibility at The Dean Academy





The Athelstan Trust

2022/2023 SLT Areas of Responsibility – Sir William Romney’s School



Jackie Rymer
Data Manager &
Examinations Officer

Tanith Lynham
Acting Deputy Headteacher/Trust
School Improvement Lead
Personal Development
SWR Sixth, Careers Education, SMSC &
British Values, Equalities & Protected
Characteristics, Staff Wellbeing, Community
Partnership, Enrichment Mapping, EDI, Data
Strategy & Implementation

Rob Skipp
Acting Headteacher (DDSL)
School Vision & Improvement Priorities
Personnel, Finance, MAT, SEF, Teacher PM,
Support & Operational PM, Health and Safety,
Trips & Visits, Governors – LGB, Curriculum
Intent/Implementation/Impact, Curriculum
Construction and Development, Timetable
Oversight, Intervention Programmes

Daisy Alban-Jones
Head’s PA and Personnel Manager

Laura Britton
Finance Manager

Toby Bell
Site Manager

Sarah Hickinbotham
Acting SENCO

Kate Townsend
SIMS Data & Cover Manager

Daniel Skirrow
Assistant Headteacher
Teaching & Learning
Strategic leadership of T&L, Teaching
Standards (QA), Personalised CPD,
ECT/ITT Lead, Homework Strategy,
Enrichment, Curriculum Middle
Leadership Development, Teaching
Standards/QA

**Laura Blake Assistant
Headteacher (DDSL)**
Behaviour & Attitudes
Attendance Strategy, Behaviour Strategy,
Rewards & Sanctions, Exclusion Analysis,
Pastoral Middle Leadership
Development, Self-Evaluation – Tutor &
Student Voice, Calendar,
Subject Leadership: Drama

Peter Dillon (DSL)
Associate Assistant Headteacher
Culture & Ethos
Partner Primary Relationships, Parent
Engagement. Attitude to Learning, Student
Council, House System, Profile of
Safeguarding, Communication with Parents
and community
Subject Leadership: Music

Leaders of Learning
Fraser Blackwood (Maths)
Jacq Powell (Communications)
David Barker (Science)
Colin Davies (Creatives)
James Fairclough (Humanities)

Sarah Nicholls
Head of Y7
Carrie Wilson
Head of Y8 & Y9
Dan Mills
Acting Head of Y10 & Y11





The Athelstan Trust



Leighterton Primary School

Staffing Structure: April 2023

School Administrator
Claire Davey

Clerk to Governors / LBS
Holly Bell

Headteacher
Meryl Hatfield
Assessment, DSL,
SENDCo, Pupil Premium,
MFL, Student Mentor/
Tutor/ Breakfast Club

Apsemore Class
Romy Hart
EYFS, Art,
Geography,
DDSL

Barnhill Class
Ellie Tetlow
Early Reading,
Computing

Boxwell Class
Alex Pocock
RE, PSHE (Life
Skills), D and T
Mathematics
(temporary)

Haymead Class
MTW
Jenna Walker
PE, Science, Forest
School

Haymead Class TF
Ridge Class M
Hazel Laver
English, DDSL

Ridge Class
Laura Bence
(Maternity Leave)
Victoria Ward
Mathematics, Music

TA/ LBS/ Supply
Teacher
Caroline Filmore

PPA Teacher
Katie Elliott

TA/ LBS
Kate Corcoran
Ridge/ Haymead

ELSA/ TA/ LBS
Fay Brisland
Apsemore 3 mornings/
ELSA 1 morning

OSC Assistant/
LBS
Sasha Ambler

Caretaker/ LBS/
Breakfast and OSC
Leader/ 1-1 TA
Dawn
Stinchcombe

Humanities—History is lead by the teaching team.





The Athelstan Trust



‘Caring, Collaborative and Excellent’

www.theathelstantrust.org

