



The Athelstan Trust



‘Caring, Collaborative and Excellent’

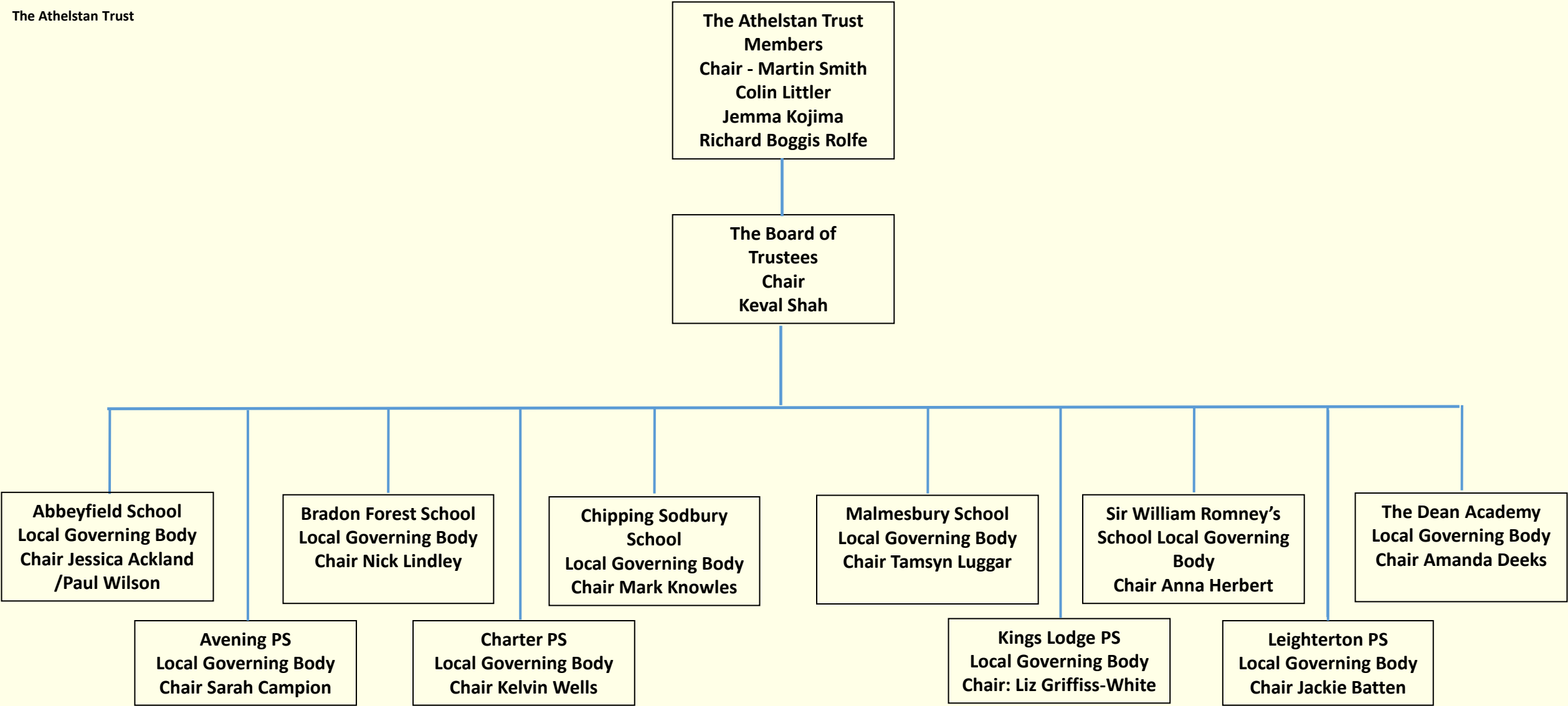
theathelstantrust.org





The Athelstan Trust

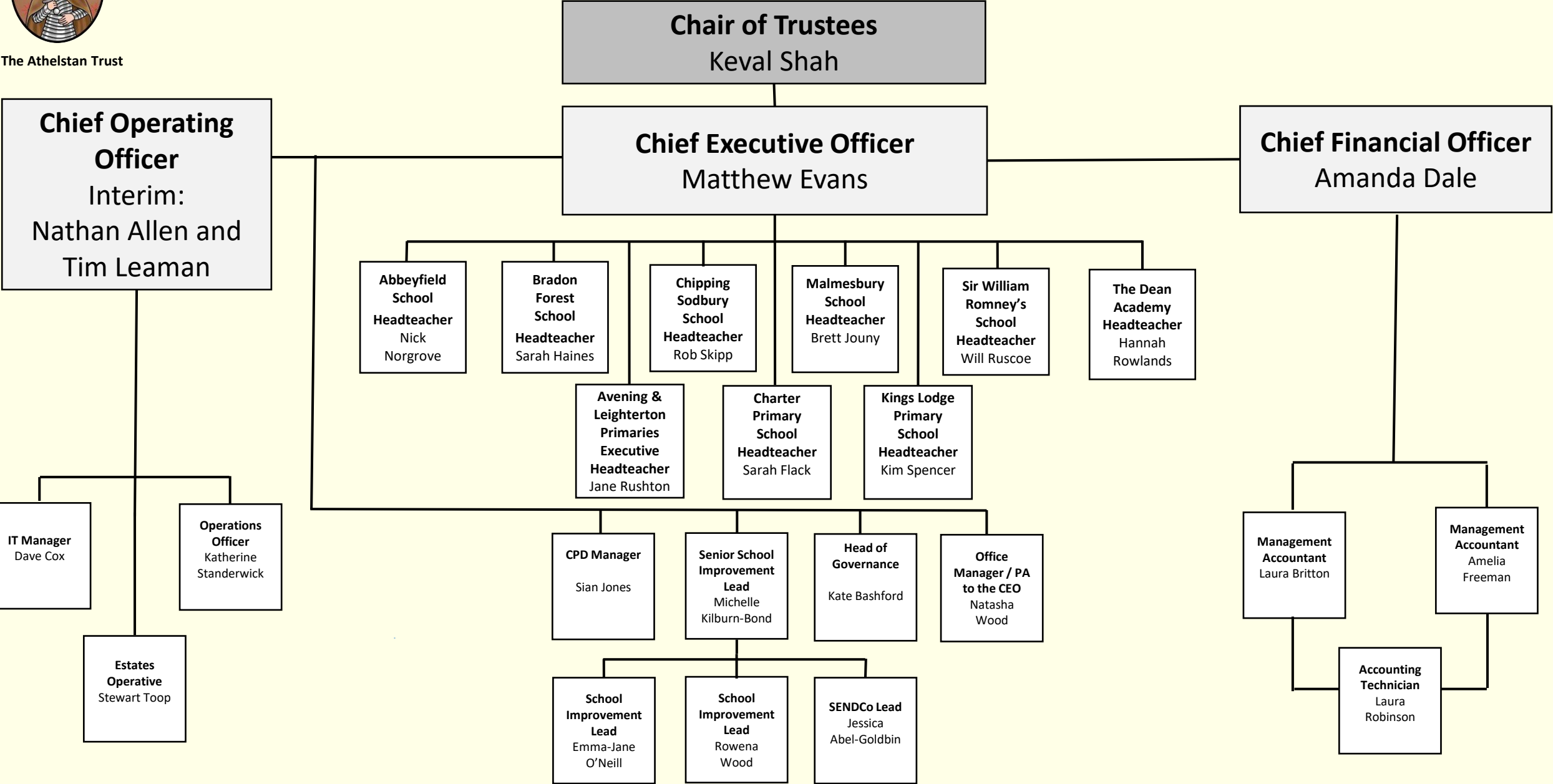
Trust Governance Structure





The Athelstan Trust

Trust Leadership Structure 2025 - 2026





The Athelstan Trust

School Improvement Team Structure, 2025-2026

Chief Executive Officer
Matthew Evans

HR Manager: Sian Jones (4 days)

- HR: Support of school-based HR leads across the trust; recruitment process management for central team / ELG; 'My New Term' oversight; leading on the HR side of SAMPeople.
- Project management of FWAMS.
- Strategic overview for National College, Odyssey Teaching School Hub (ECF & NPQs).
- Embed HR best practice across The Athelstan Trust.
- Athelstan Trust Day Organisation.

Senior SIL: Michelle Kilburn-Bond (0.85 fte)

- Line Management of SI Team; communication with HTs / SLT about SIL support & deployment.
- Strategic overview of Athelstan QA and Trust Day CPD
- Disadvantage: Leading collaboration.
- English Specialist: Leading collaboration; bespoke support and QA as requested; KIT with evidence / best practice.
- Humanities, PD and Expressive Arts: Point of contact for collaboration / support.

SIA: Geraldine Tidy (consultant)

- Primary Specialist: 4 visits to each primary school with subsequent report and recommendations.
(other consultants used for bespoke support e.g. Lindsay Palmer)

Helen Wilkinson (consultant)

- Safeguarding Specialist: leading collaboration; bespoke report and QA as requested; KIT with evidence / best practice.
- LAC: Point of contact for collaboration / support

SIL: Emma-Jane O'Neill (0.9 fte)

- Strategic overview of Data: Exams, Assessment, Attendance (Power BI), Reporting and AI. (incl. data & assessment lead point of contact for collaboration).
- Athelstan Trust QA
- Maths Specialist: Leading collaboration; bespoke support and QA as requested; KIT with evidence / best practice.
- Computing, PE, Languages & Business / Economics: Point of contact for collaboration / support.
- CPD: Learning Circuits, AI

SIL: Rowena Wood (0.9 fte)

- Strategic overview of Reading: reading age testing, intervention & NGRT data (incl. collaboration).
- Athelstan Trust QA
- Pastoral Care (incl. primary liaison / transition / attendance) & Inclusion Specialist: Leading collaboration; bespoke support and QA as requested; KIT with evidence / best practice.
- Science, DT (including textiles) & Vocational: Point of contact for collaboration / support.
- CPD: ALLSorts curator, Pastoral Interventions

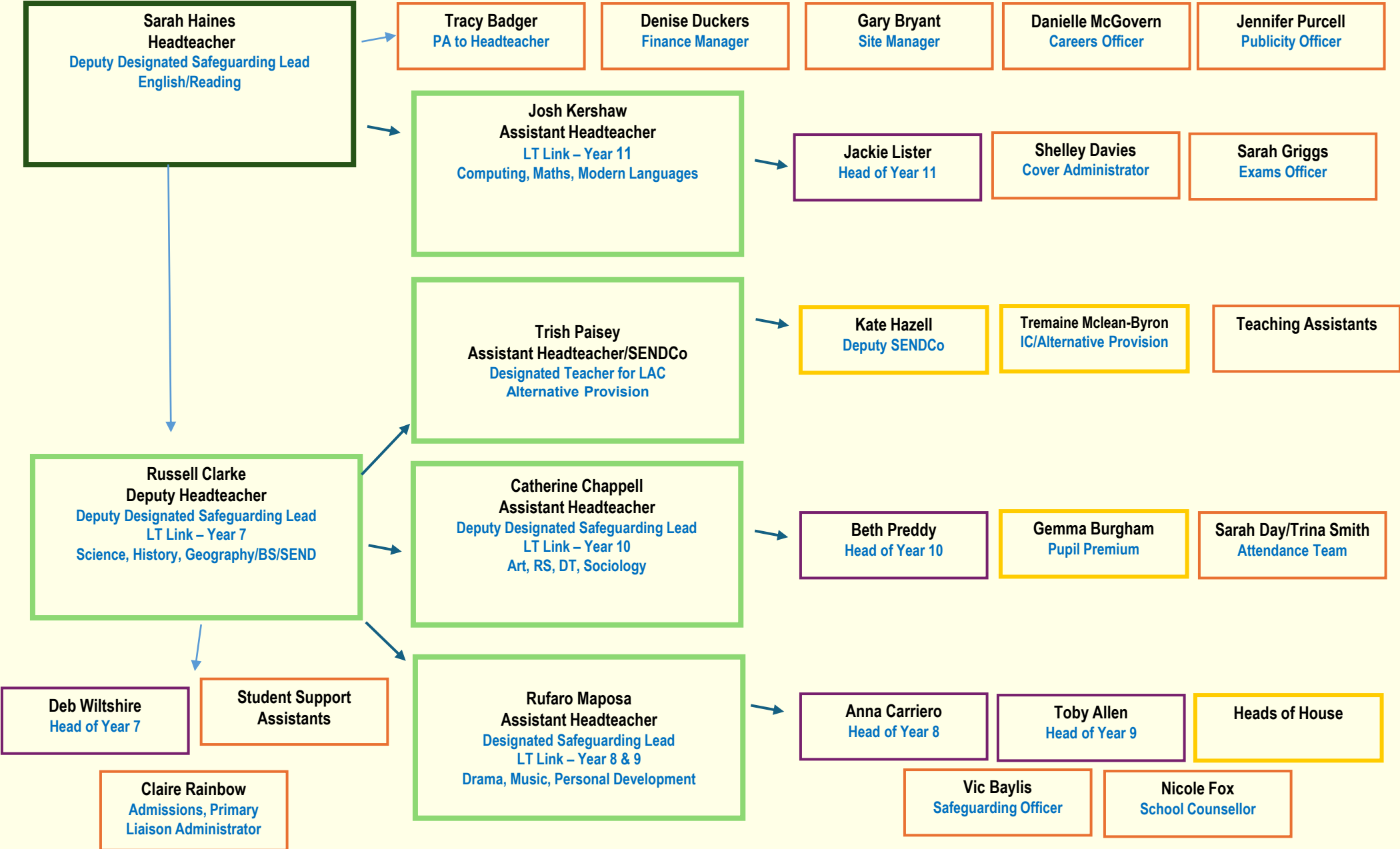
SIL: Jessica Abel-Goldbin (0.2 fte)

- SEND Specialist: Leading collaboration; bespoke support and QA as requested.
- Athelstan Trust QA
- CPD: TA training (incl. induction)



The Athelstan Trust

2025/26 Leadership Responsibilities - Bradon Forest School





The Athelstan Trust

Malmesbury School SLT Areas of Responsibility 2025-2026

OF – OFSTED framework
QA – Quality Assurance
EDI – Equality, Diversity & Inclusivity
ECT – Early Career Teacher
ITT – Initial Teacher Training
HoY – Head of Year
AL – Academic leader



Jessica Abel-Goldbin – SENDCo

- TAs
- EHCPs
- PALSS meetings

Brett Jouny, Headteacher

OF – Leadership & management

Local Governing Body, SIP/SEF, QA overview, Recruitment, AP/Bungalow overview, Admissions, Reading strategy

Line management of SEND & HR

Dan Baker Assistant Head – Y7

OF – Behaviour and Attitudes

- DSL
- Local Youth Network
- School Council
- Counsellors
- Year 7 and Transition
- Chair of HOY

Line Manage PE

Tara Griffin (Temp)
HoY Year 7 & Transition

Rachel Bird (Temp)
AL Year 7

Anne-Marie Whaley Assistant Head – Y11

OF – Quality of Education

- Teaching & Learning Lead
- CPD
- QA lead
- ECT/New staff/ITT
- Appraisal
- GCSE strategy
- Year 11

Line Manage Humanities

Jacob Byrne
HoY Year 11 & Classcharts lead

Jacob Byrne (Temp)
AL Year 11

Mark Shadrick Deputy Headteacher

OF – Quality of Education Timetable

- Local Governing Body
- Chair of Curriculum
- Options
- Data manager
- Pupil premium
- Timetable
- Digital strategy
- GDPR
- Year 8

Line Manage English, Science and Maths & Computing

Ellie Kirkby
HoY Year 8

Rachel Yeates
AL Year 8

Emma Eagles
Data Manager

Jess Green Assistant Head – Y10

OF – Personal Development

- Exams
- Cover
- Educational visits/trips
- Health & Safety
- Extracurricular
- EDI overview
- House system/Heads of House
- DDSL
- Calendar/Assembly overview
- Marketing
- Year 10

Line Manage RS/ilearn, Drama and Art

Harry Humphreys
HoY Year 10

Barney Wakeford
AL Year 10

Ellinor Hull
Exams Officer

Louise Stanton Assistant Head - KS5

OF – Post 16

- Sixth form
- DDSL
- Careers lead
- School transport
- PTA
- Alumni
- Duties
- BTEC Quality Nominee
- Years 12 and 13

Line Manage IBL and DT

Emma Hall
HoY Year 12

Jon Brown
HoY Year 13

Ziska Dodd
AL Year 12 & 13

Paul Loveday Acting Assistant Head – Y9

OF – Behaviour and Attitudes

- Attendance
- Designated teacher for LAC
- DDSL
- SMHL
- Staff Wellbeing & Workload
- Pastoral project
- Year 9

Line Management Music

Roz Scott (Temp)
HoY Year 9

Matthew Loveday
AL Year 9



The Athelstan Trust

Chipping Sodbury School SLT Areas of Responsibility – 2025/2026



Rob Skipp, Headteacher

OFSTED – Leadership & Management

Personnel, recruitment and retention, faculty review process, liaison with professional assoc., suspensions and exclusions, analysis of exam data, whole school self-evaluation, school evaluation and reviews, School Improvement Plan, strategic direction, finance, appraisal, school calendar, day to day site matters

Line management of the Senior Team, Maths, MFL, English, Head of Sixth, Finance Manager, Site Manager

Julie Passco

Head's PA

HR Lead

Jennifer Howe

Deputy Headteacher

- Pupil Premium Co-Ordinator
- Attendance
- Literacy Strategy
- Behaviour and Culture Strategy
- Line management of PPL Y10
- Open Evening
- Pupil Premium
- Educational Trips, visits and enrichment
- Alternate Provision
- Staff Wellbeing
- Designated Teacher
- Website and Comms

Line management of Student Support Team, PPLs, Heads of House, First Aid, Maths

Laura Davies

Assistant Headteacher

- Curriculum
- Timetable
- Options
- GDPR
- Duty Rotas
- Classroom experience, marking and homework
- Literacy
- Admissions
- GDPR
- Visitors to the school
- Strategic oversight of cover
- Point of contact for KS3

Line management of PPL, Y8&9, Art, DT, PE, Admissions Admin, Cover Administrator

Melissa Hillier

Assistant Headteacher

- **SENDCo**
- Ilearn/Inclusion, alternative provision
- SEND Compliance
- SEND Strategy
- Literacy screening
- Interventions
- Y6 Transition Evening
- Parent Liaison Events

Line management of Resource Base Manager, PPL Y7, Deputy SENco, Ilean Manager, HLTA.

Hannah Grant

Resource Base Manager

Kevin Milburn

Assistant Headteacher

- DSL
- Internal and External Exams
- Transition from Y9 and 11
- Shared lead of Faculty Heads
- Point of contact for KS4
- Raising Standards Data

Line management of Science, Humanities, Exam Officer, Curriculum, and Data Admin, PPL Y11, Senior Deputy DSL

Heads of Faculty:

English – Simon Lewis
Maths – Chris Chapman
Humanities – Richard Pellow
Science – Jo Davies
Physical Education – James Allen
Modern Foreign Languages – Chris Pugh
Music – Sally Boulton
Head of Sixth Form - Gillian Hilleard

Jemma Donnelly

Assoc Assistant Headteacher

- CPD
- Working Groups
- ECT
- ITT
- Assembly Rota
- Tutor Notices

Lauren Ellis

Assoc Assistant Headteacher

- Student Leadership
- Co-curricular Engagement
- Tutor Programme – HWK and metacognition through tutor time
- Mental Health Lead
- Celebration Awards
- Enrichment week (assist. DH)

Line management of Careers Lead

Thomas White

**Pastoral Progress Lead
Y7**

Robin Taylor

**Pastoral Progress Lead
Y8 - 9**

Stephen Hallett

**Pastoral Progress Lead
Y10**

Lauren Ellis

**Pastoral Progress Lead
Y11**



The Athelstan Trust

The Dean Academy

Staffing Structure: 2025-26



Headteacher Hannah Rowlands

hrowlands@thedeacademy.org

- SIP/SEF
- Vision & Ethos
- Strategy
- Budget and Finance
- Curriculum Plan & TT
- Complaints
- Budget
- HR
- PR/Community/Parent Voice
- Calendar
- PP

- LGB
- Staff Wellbeing & Staff Voice
- Admissions
- Careers
- Website

Line Management:

- SLT
- Head's PA
- Resources
- Finance Lead
- Site Lead
- IT Support
- Careers
- Maths, English, Science

Deputy Headteacher Natalie Mehrotra-Hughes

nmehrotrahughes@thedeacademy.org

- DSL
- SEND
- Inclusion
- Attendance
- Cover
- 1st Aid
- Health & Safety
- EDI
- Duty Rotas
- BTEC QN
- Personal Development
- LAC
- EAL

Line Management:

- SENDCo
- Attendance
- Cover Coordinator
- DDSL
- MFL
- Performance/Drama
- PD/RE

Assistant Headteacher Pete Glynn

pglynn@thedeacademy.org

- Behaviour
- Culture
- House System
- Extra-Curricular & Trips
- AP/SSC
- Assemblies

Line Management:

- ADP
- HoY (7-10)
- Pastoral Support
- AP Support
- Classcharts
- Assembly Rota

Deputy Headteacher T Fessey

tfessey@thedeacademy.org

- Raising Standards
- Data & Assessment
- Exams
- Options
- Homework
- Transition
- Progress Evenings
- GDPR

Line Management:

- Data and Exams
- PE
- Computing & Business
- YoY 11

Assistant Headteacher T Adams

tadams@thedeacademy.org

- CPD
- Teaching & Learning
- Quality Assurance
- Teach 1st /ECTt:
- /GITEP
- Student Voice

Line Management

- Humanities
- Music

SENDCo H Thayer

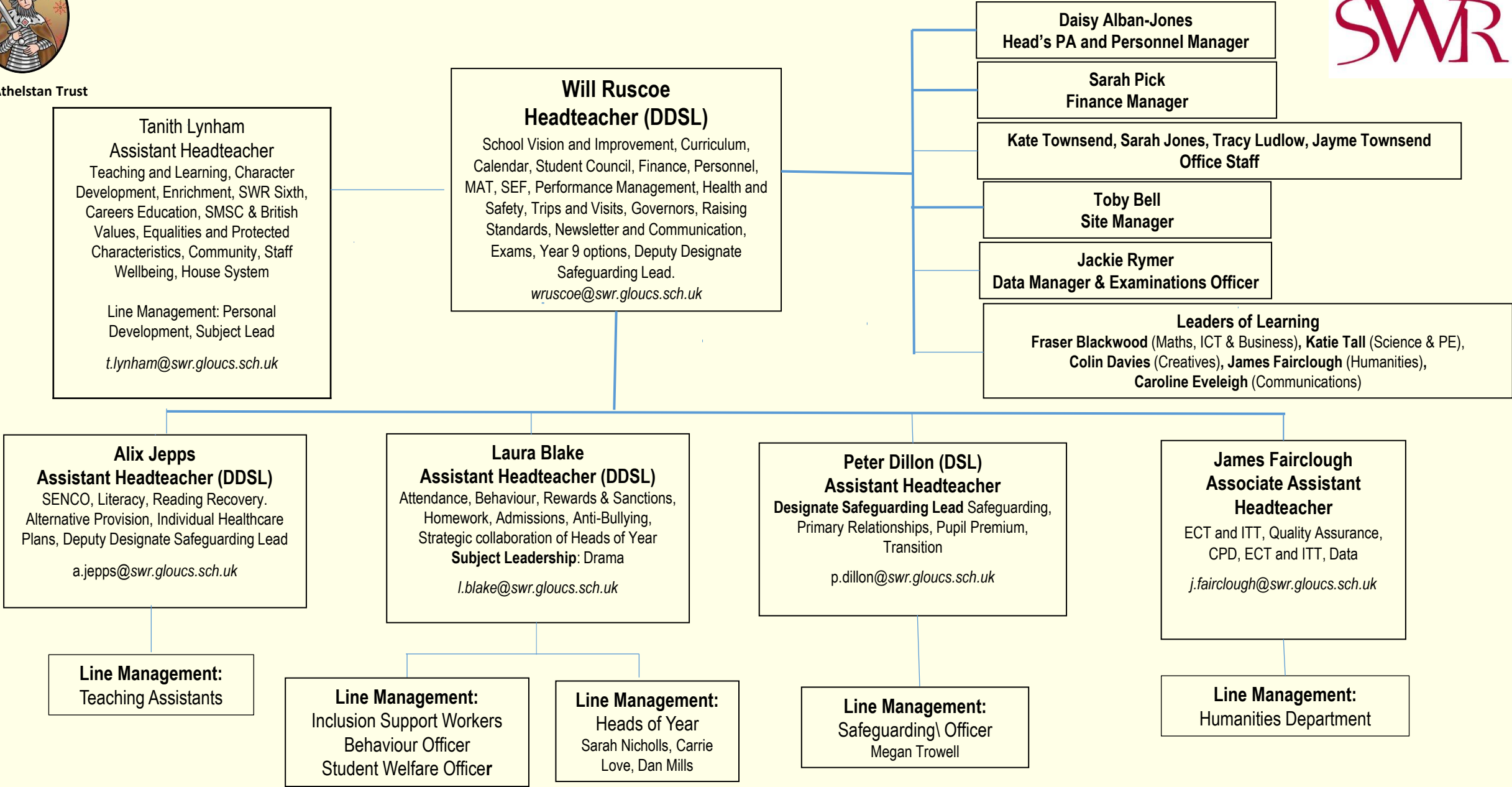
hthayer@thedeacademy.org

- Deputy SENDCo
- SEND Admin
- TAs (with Deputy SENDCo)
- EPIC support workers



The Athelstan Trust

2025/2026 SLT Areas of Responsibility – Sir William Romney’s School





The Athelstan Trust

Abbeyfield Secondary School

Senior Leadership Team Roles and Responsibilities 2025 - 2026

Business Manager

Mrs Stethridge

Responsibilities

- Finance
- Procurement
- Premises
- PFI liaison
- Marketing
- Community relations
- HR
- GDPR
- Health & Safety

Line Management

- Support staff
- Finance
- HR
- MDSAs

LRS@abbeyfield.wilts.sch.uk

Assistant Headteacher
- Student experience
Mr Tregilgas

Responsibilities

- DSL
- CLA lead
- Tutor programme
- PSHE
- 'Character' lead
- Admissions
- Enrichment
- House link

Line Management

- RSLs – All yr groups.

dht@abbeyfield.wilts.sch.uk

Deputy Headteacher
– Attitudes to learning
Mr Cutler

Responsibilities

- Attendance
- Behaviour
- Reset
- Inclusion and AP
- Managed Moves
- Yr 6 transition
- Staff duties
- Parental engagement
- DDSL
- House link

Line Management

- Creative
- PE
- SWaS Manager
- Cover supervisors

sac@abbeyfield.wilts.sch.uk

Headteacher

Mr Norgrove

Responsibilities

- Ethos and standards
- Strategic planning
- External support
- Deployment of finance and resources
- Oversight of Vulnerable learners
- Staff welfare
- Governance
- Appointments and recruitment strategy
- SIP
- SEF
- Exclusions
- Expansion
- DDSL

Line Management

- SLT
- MFL
- Librarian

nmn@abbeyfield.wilts.sch.uk

Deputy Headteacher
– Academic achievement
Mr Stewart

Responsibilities

- Curriculum
- Timetabling and staffing
- Appraisal
- Data systems
- Assessment and reporting
- Examinations
- IT infrastructure
- Yearly planner
- Primary liaison
- Oversight CIAG
- House link

Line Management

- English
- Math
- Science
- Exams officer

jrs@abbeyfield.wilts.sch.uk

Assistant Headteacher
- T & L
Mrs Virgin

Responsibilities

- Teaching and Learning
- CPD
- Homework
- Teacher training
- KS4 options lead
- QA of T&L
- Oversight of Post 16
- Oversight of Literacy and Numeracy
- House link

Line Management

- Post 16
- Hums
- DT
- Bus/Ec/IT

imv@abbeyfield.wilts.sch.uk

SENCo

Mrs Caplat

Responsibilities

- Provision for SEND
- TA deployment

Line Management

- Deputy SENCo
- SEN administrator

aec@abbeyfield.wilts.sch.uk



The Athelstan Trust

Leighterton Primary School

Staffing Structure: 2025-2026



School Business Manager

DDSL/Breakfast Club

Claire Davey

Clerk to Governors / LBS

Holly Bell

Executive Headteacher

Jane Rushton

Assessment, DSL, Pupil
Premium, Student Mentor/ECT
Tutor

SENDCo (0.1)

Tina Harris

Apsemore Class

Cath Roberts

D&T, EYFS, RE

Barnhill Class

Ellie Tetlow

Early Reading
Phonics, Computing,
ECT Mentor

Boxwell Class TW

Alex Pocock

Art, PSHE (Life Skills)

Boxwell Class MTF

Hazel Laver

English, DDSL

Haymead Class

Georgia Yarham

ECT, PE Shadow

Ozelworth Class

Laura Bence

Mathematics

Ozelworth Class

Jenna Walker

PE, Science,
Forest School

Saddlewood Class

Gemma Holian

**Assistant
Headteacher**
Geography, History

Ridge Class

Victoria Ward

Music, English

Mat cover TA/ LBS/ HLTA

Jennifer Leroy

2 mornings TA mat cover and 3
mornings HLTA

ELSA/ TA/ LBS

Fay Brisland

Maternity Leave

OSC Assistant/
LBS

Sasha Ambler

Caretaker/ LBS/
Breakfast and OSC
Leader/ TA

Dawn Stinchcombe



The Athelstan Trust

AVENING PRIMARY SCHOOL

Staffing Structure 2025-2026

Executive Headteacher Jane Rushton Curriculum, DSL, Pupil Premium, English, RE, History, Music, MFL, Student Mentor	SENDCo Tina Harris DDSL	Administrator Kelly Wilkinson
	Mental Health Lead Deb Carter DDSL, Forest School Lead	Clerk to the Governors Alex Adcock



<i>Owls Class</i> (Y5/Y6) Emma Stafford PSHE	<i>Hawks Class</i> (Y3/Y4) Oli Hall Science, DT	<i>Kestrels Class</i> (Y1/Y2) Mark Wilkinson (Deputy Head Teacher) Maths, Early Reading, PE, Computing Induction Tutor/ Mentor	<i>Eagles Class</i> (R/Y1) Lydia Cook Art	<i>Cover Teacher</i> Joanna Wood Geography
<i>Owls Class TA</i> Tina Boulton	<i>Hawks Class TAs</i> Alison Wilson Sam Hatt (SEN)	<i>Kestrels Class TAs</i> Kelly Wilkinson DDSL Vacancy	<i>Eagles Class TAs</i> Ness Gobey Liz Fuller (SEN) Amy Aldhouse (SEN)	<i>Breakfast/After School Club/ Play Team</i> Amy Aldhouse Julie Woodman



The Athelstan Trust

CHARTER PRIMARY SCHOOL

Staffing Structure 2025-2026



<div>Headteacher</div> <div>Sarah Flack</div> <div>DSL, Curriculum</div> <div>English, Student Mentor, Online safety and Attendance</div>		<div>Deputy Headteacher</div> <div>Laura Beale</div> <div>DDSL</div> <div>ECT Induction Tutor, Foundation Subject Curriculum Lead, Mathematics, Pupil Premium</div>		<div>Assistant Headteacher</div> <div>Caroline Bowater</div> <div>DDSL, Resource Base Manager and SENCO</div>		<div>School Business Manager</div> <div>Sophie Flynn</div> <div>Educational Visits Co-ordinator</div>			
				<div>Assistant Headteacher Lucy Adams</div> <div>DDSL, EYFS, Phonics and Early reading, Music, PSHE</div>		<div>Clerk to the Governors</div> <div>Clare Townsend</div>			
						<div>Admin Officer</div> <div>Clare Townsend</div>			
<div>Phoenix Class – Year 6</div> <div>Mrs Robinson (Reading and History/Geog/Religion)</div> <div>Student Teacher</div> <div>Miss McGrory</div>		<div>Hippogriff Class – Year 5</div> <div>Mrs Beale and Mrs Dunford (Hist/Geog/Religion)</div> <div>TA</div> <div>Mrs Wilson</div>		<div>Griffin Class – Year 4 –</div> <div>Mrs McKee (Science/Comp/DT)</div> <div>TA</div> <div>Mrs Wells</div>		<div>Kelpie Class –Year 3</div> <div>Miss Preater</div> <div>TA</div> <div>Mrs Palmer</div>		<div>Unicorn Class – Year 1/2</div> <div>Miss Sharman (PE/PSHE)</div> <div>TA</div> <div>Mrs Perry</div>	
<div>Pixie Class – EYFS/Year 1</div> <div>Mrs Adams</div> <div>TA</div> <div>Mrs Smith</div>		<div>Dragon – Hub 1</div> <div>Miss Tofani (Art/French)</div> <div>TA</div> <div>Mrs Groves</div> <div>Mrs Hurcom</div> <div>Mrs Kirtley</div> <div>Mrs Tinson</div>		<div>Dragon – Hub 2</div> <div>Mrs Bowater and Mrs Young (Science/Comp/DT)</div> <div>TA</div> <div>Mrs Bevan</div> <div>Mrs McClements</div> <div>Mrs Thomallari</div>		<div>Enhanced Learning Provision</div> <div>TA</div> <div>Mrs Dalgado</div> <div>Mr Skeates</div> <div>Mrs A Flack</div> <div>Mrs Jones</div>		<div>Ping’s Den – ELSA</div> <div>Miss Huggins</div> <div>Intervention and Speech and Language</div> <div>Mrs Greenslade</div> <div>Pastoral Support Manager</div> <div>Mrs Brown</div>	



The Athelstan Trust

KINGS LODGE PRIMARY SCHOOL

Staffing Structure 2025-2026



Headteacher Kim Spencer <i>DSL</i> <i>CLA/PCLA</i> <i>Attendance</i>	Deputy Headteacher Amanda Woon <i>Curriculum</i> <i>DDSL</i> <i>Science</i> <i>Student/ECT Mentor</i>	Finance Officer Jayne Rickett	Pastoral Manager Kirsty Tilley <i>ELSA</i> <i>Attendance</i>
		Senior Admin Officer Louise Romain	Admin Officer Denise Tyrer

Willow Class (Y5/Y6) Lily Martin <i>UPS</i> <i>English Lead</i> Yew Class (Y5/Y6) Martha Green <i>MPS</i> Pine Class (Y5/Y6) Dan Wrixon <i>UPS</i> <i>Computing Lead</i> <i>Online Safety Lad</i>	Birch Class (Y3/Y4) Lara Carey Birch Class (Y3/Y4) Danielle Allison Kim Spencer Birch Class (Y3/Y4) Sarah Angell Katie Pope <i>Humanities Lead</i>	Larch Class (Y1/Y2) Gemma Dutton <i>UPS</i> <i>Phonics Lead</i> Amanda Woon Holly Class (Y1/Y2) Gemma Scott <i>MPS</i> <i>PE Lead (shared)</i> Elm Class (Y1/Y2) Sarah Gale <i>KSL Leader</i>	Ash Class (Reception) Evie Amos Beech Class (Reception) Sarah Cooke <i>Early Years Leader</i> <i>Music Lead</i> Louise Mungham <i>(Wednesdays)</i> <i>MPS</i> <i>RE Lead</i>	Teachers with no class responsibility Rachel Fitter <i>SENDCo</i> Evangeline Pearce <i>MPS</i>
Class TAs Amy Parker and Erin Howell Alli Howell Steph Whitfield	Class TAs Sharon Walton Cheryl Gledhill Aimee Collis	Class TAs Ruth Phippen Jackie Sett Sally Fisher and Sue Averies	Class TAs Nicole Taylor-Matthews Hayley Knight	Midday Supervisory Assistants Sue Walker Kate Baldwin Nikita Allison



The Athelstan Trust



‘Caring, Collaborative and Excellent’

theathelstantrust.org

